

Northam Park Renovation

Monday, May 15, 2023



Timeline

April 12 – Parks & Recreation Advisory Board (PRAB)

April 13 – Northam Park Tennis Advisory Committee (NPTAC)

May 1 – City Council presentation

May 8 – NPTAC meeting to discuss information

May 10 – PRAB meeting to discuss information

May 15 – City Council presentation and 1st reading of design contract ordinance

May 22 – City Council presentation and 2nd reading/vote on design contract ordinance



Discussion Overview

Recap of Process

Recap of NPTAC and PRAB meetings

Clarify information and answer questions from meetings with Council

Review Design Ordinance



Follow-Up Information

Utilization Data

Gross utilization percent

- Simplified calculation of usage
- Not based on user experience
- Staff determined this is not a good indication for modified court play



Utilization Data

Simulation of reduced courts

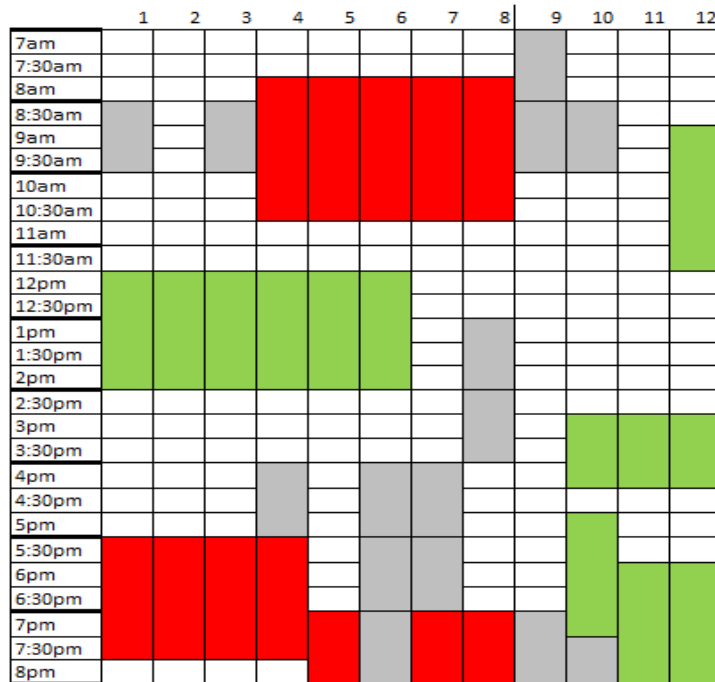
- Thorough assessment during peak usage (June & July), reasonable accommodations
- 8 courts accommodates all but 2% of 2022 play
 - 43 reservations would not fit in schedule
 - With additional time block (8:30 – 10 PM) reduces to 16 reservations that would not fit (less than 1%)
 - **Swim and Racquet courts are open 8AM – 11PM everyday**
 - Watering/maintenance would be able to fit in schedule



Court Usage Adjustments

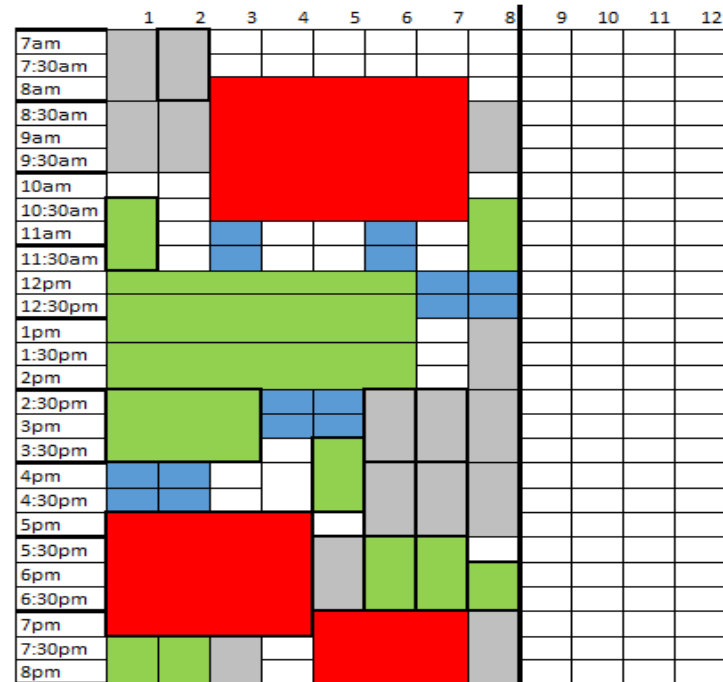
Shown: Thursday, July 21, 2022.

12 courts



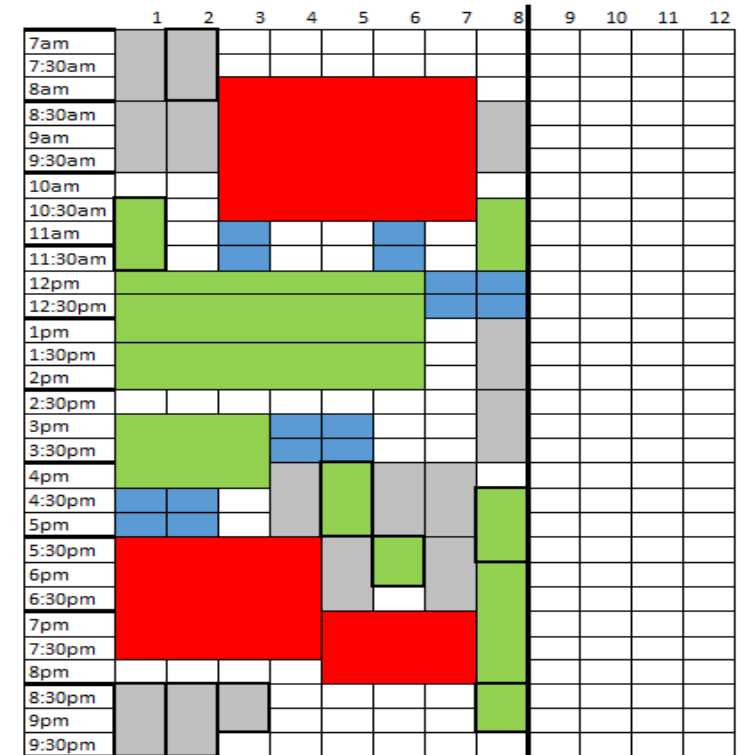
Total Reservations
30

8 courts



8 Court Reschedule 13 (+1)
How many would not fit within one time block 0

8 courts with added time slot

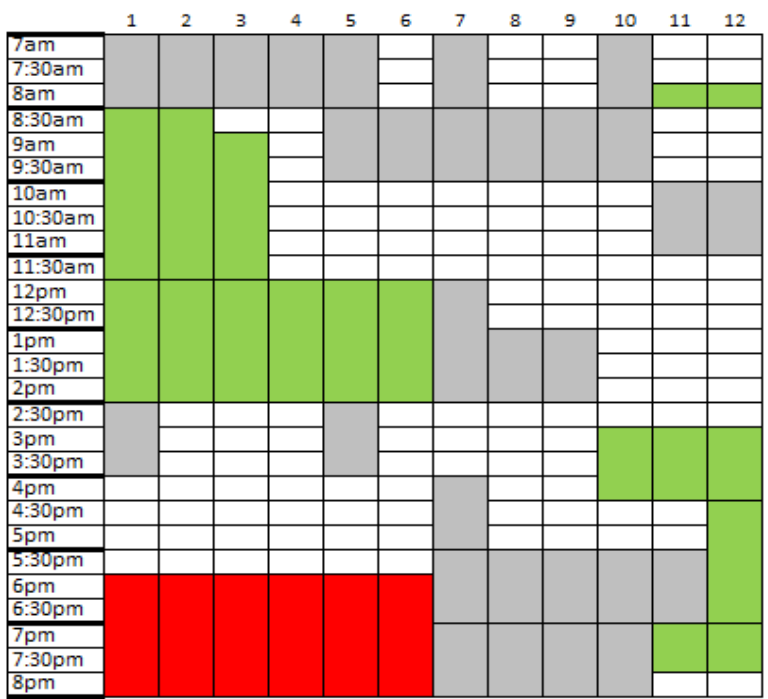


8 Court Reschedule 9 (-3)
How many would not fit within one time block 0

Court Usage Adjustments

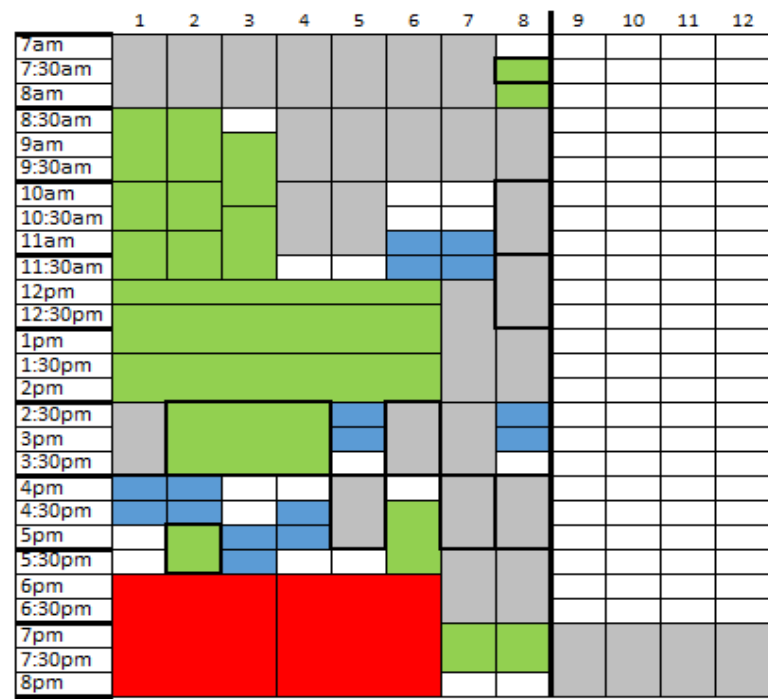
Shown: Monday, July 18, 2022.

12 courts



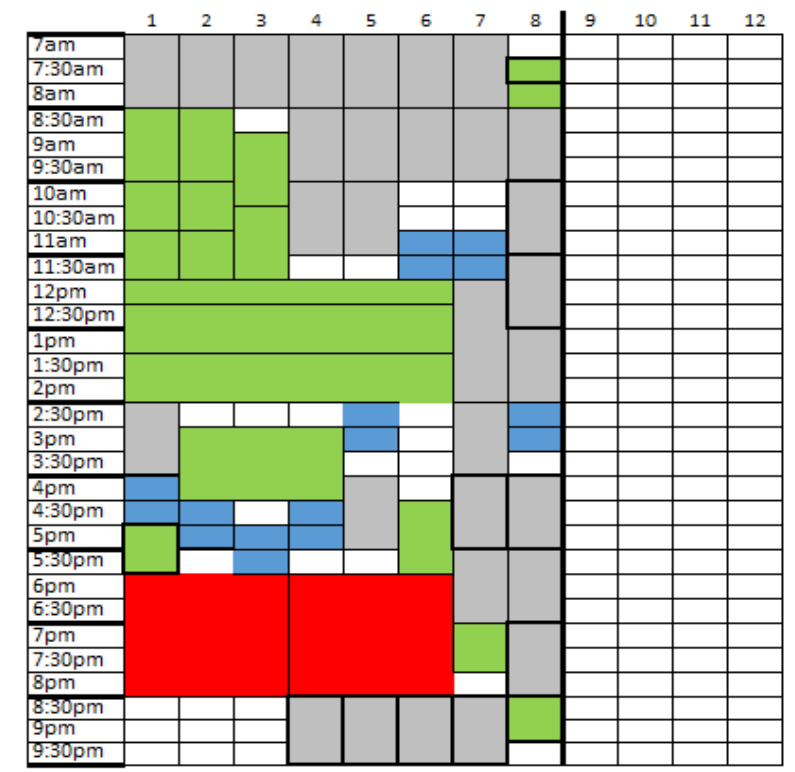
Total Reservations
50

8 courts



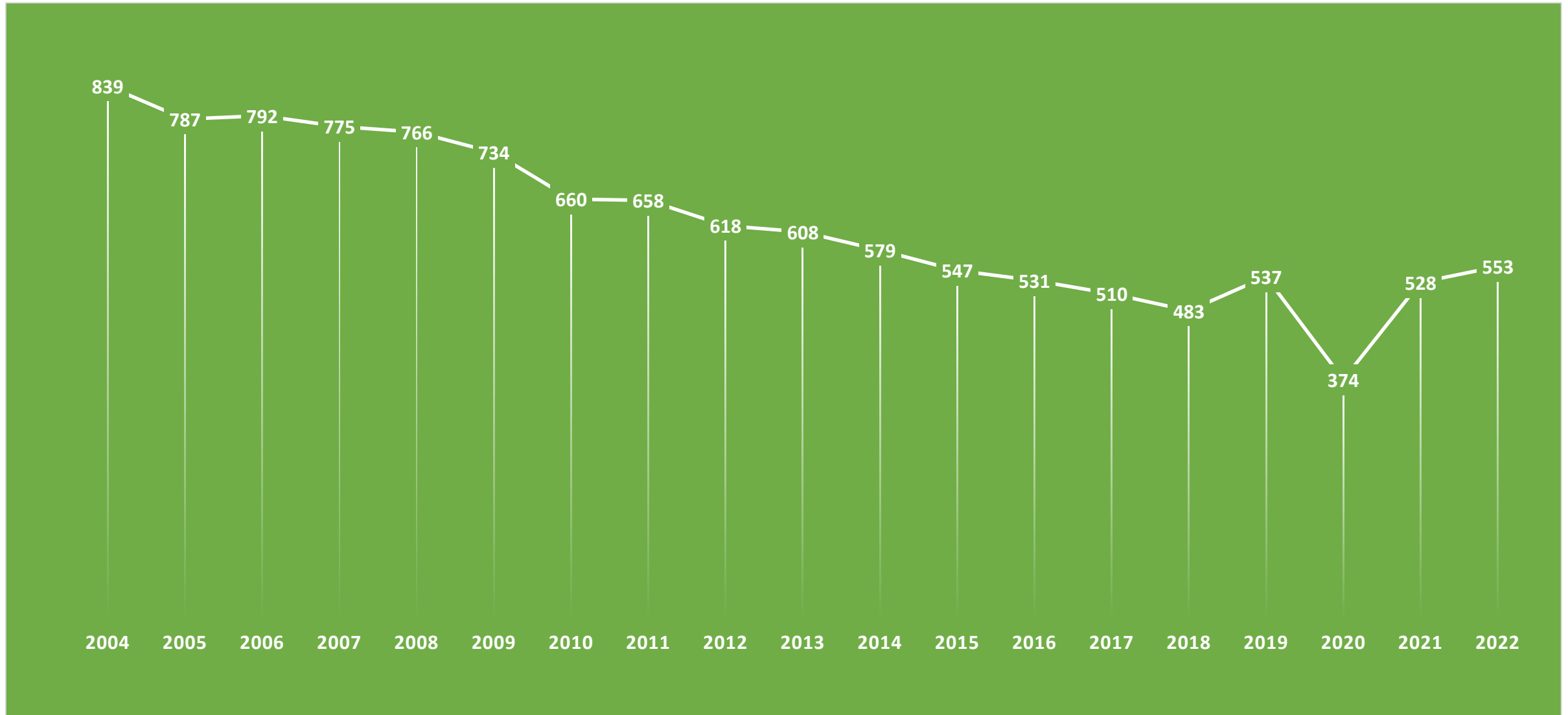
8 Court Rescheduled 9 (-3) How many would not fit within one time block 4 (+2)

8 courts with added time slot



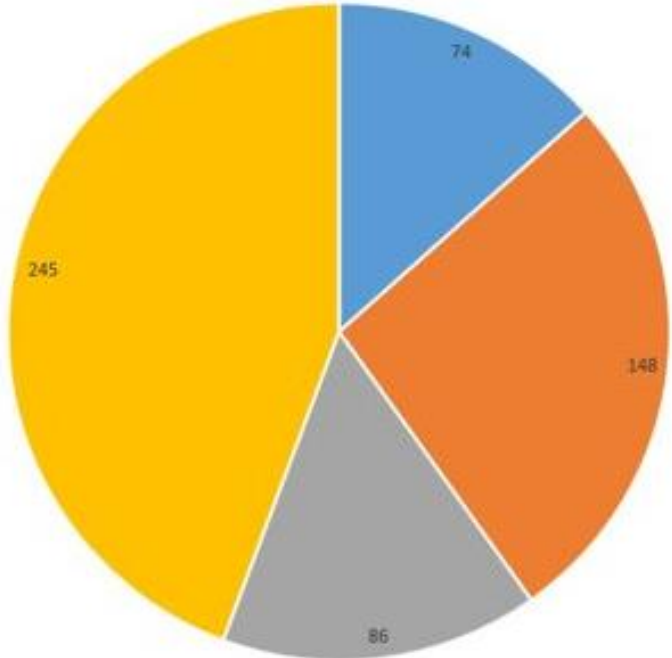
8 Court Rescheduled 12 (+0) How many would not fit within one time block 0

Northam Tennis Membership

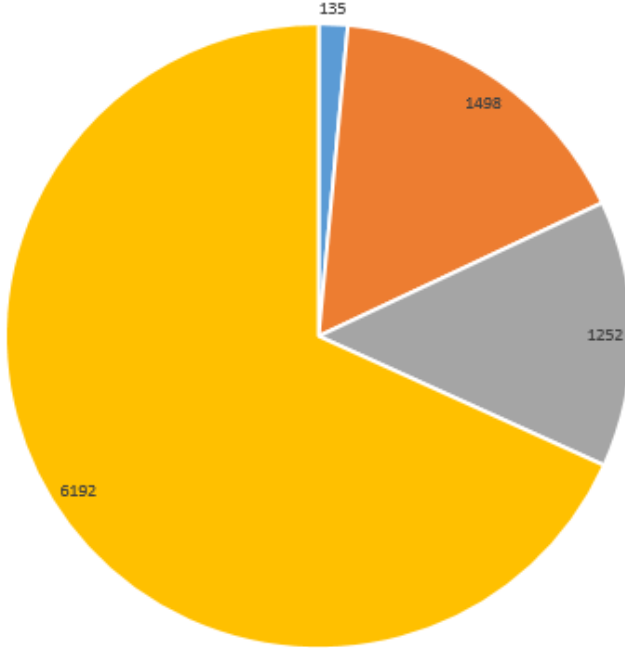


Membership and Visit Demographics 2022

Membership By Age



Pass Visits by Age



- Ages 17 and Under
- Ages 18-49
- Ages 50-59
- Ages 60+

Junior Play in 2022

Membership

Junior Passholders (Individual membership for Ages 17 and under): 24

Members 17 & under with Family Passes: 50

Lessons

Junior Lessons *System Wide: 332 Registrations, 223 Unique Participants

Junior Lessons at Northam: 248 Registrations, 156 Unique Participants

Junior Lesson Participants with Memberships at Northam: 19

Har-Tru courts make for a good introduction to the game for Juniors, however as young players progress into competitive play the primary surface for match play is hard courts and they continue to play on hard courts until they get older.

*Includes Lessons at Hard Courts in UA Parks



Greater Columbus Tennis Association (GCTA)

GCTA Clay Court Facilities

New Albany Country Club	Private	12
Northam Park	Public Own & Operate	12
Swim and Racquet Club	Private	10
Scioto Country Club	Private	9
Worthington Hills Country Club	Private	8
Brookside Country Club	Private	7
The Country Club of Muirfield Village	Private	7
Champion's Tennis Club	Public Own/Private Ops	6
Columbus Country Club	Private	6
Corazon Tennis	Private	6
Jefferson Country Club	Private	6
Lakes Country Club	Private	6
Wedgewood Country Club	Private	6
Granville Tennis Club	Private (Non-Profit)	5
Medallion Country Club	Private	5
Kinsale Golf & Fitness	Private	2

- GCTA is the USTA Community Tennis Association for Central Ohio
- GCTA conducts Men's & Women's Summer Leagues
 - Northam Park – 2022 teams
 - 17 Women's teams
 - 12 Men's teams
- Leagues are played at Central Ohio public and private facilities
 - 16 Clay Court complexes
 - 2 public facilities
 - 14 private facilities
 - 113 Clay courts
 - 30 Hard Court complexes
 - 243 Hard Courts



GCTA Rules

Match Start Time

Men: no stated rule on start time

Women: AM matches must start between 8-9:15am, Career evening matches must start at 6:30pm

Courts required for match play

Men

3.5 and 4.0: 5 courts

4.5 Plus an Gold: 4 courts

Silver and Platinum: 3-4 courts, set before the season

3.0, 3.5 Plus and Open: 3 courts

Women

Daytime 2.5, 3.0, 3.5, 4.0, Gold: 5 courts

Daytime Level 4.5, Platinum Level and Career 3.0, 3.5, 4.0 and Open: 3 Courts



GCTA Match Play

Court scheduling

- City coordinates court usage for matches with NPTAC Women's & Men's Chairs
- City only allows up to 9 courts at one time
- Some teams stagger starts back to back on same courts
- Starting time for first match meets GCTA criteria



GCTA Team Play – 2022 Season

Number of courts for matches

- 13 teams – 3 courts
- 8 teams – 4 courts
- 7 teams – 5 courts

Home matches in June & July

- 2 weeks – 3 teams
- 3 weeks – 11 teams
- 4 weeks – 10 teams
- 5 weeks – 3 teams
- 6 weeks – 1 team

Court usage

- 25 matches with 5 courts
- Zero times 5 court play overlapped and used 10 courts
- 7 times 9 courts for matches at same time



Operating Budget - Non-Resident Fees

Heard non-resident fees are low for market

Typical Department upcharge is 50% to non-residents

Upper Arlington	Tennis	Tennis/Pool
Individual	\$421	\$502
Family	\$557 - \$835	\$683 - \$1,010
Senior	\$371	\$430
Senior Couple	\$464	\$557
Junior	\$109	n/a

Swim & Racquet	Initiation/Annual
Individual	\$625 / \$756
Family	\$2,500 / \$1,358
Couple (age 18)	\$1,000 / \$1,035
Senior (2 members)	\$1,000 / \$933



Design

Anticipated Construction Sequencing

Winter - Demolition of Existing Building, Utility Work

Spring - Foundations, Building Exterior

Summer - Building Interior

Late Summer/Early Fall - Tennis Court Demolition

Fall - Tennis Court Construction, Paths, Site Cleanup



Adjusted Tennis Operations

Irrigation: Rework irrigation system and provide temporary controls. This could be bid as an add alternate

Storage: For court equipment once building is demolished

Restrooms: Available at the Pool Concessions Building

Office: Temporary accommodations would be needed

Site Access: Anticipating that this would remain on the north side of the courts. Modifications may be needed to avoid work areas.

Anticipated Closure: Around August 1st, 2024. Could include as a contract requirement





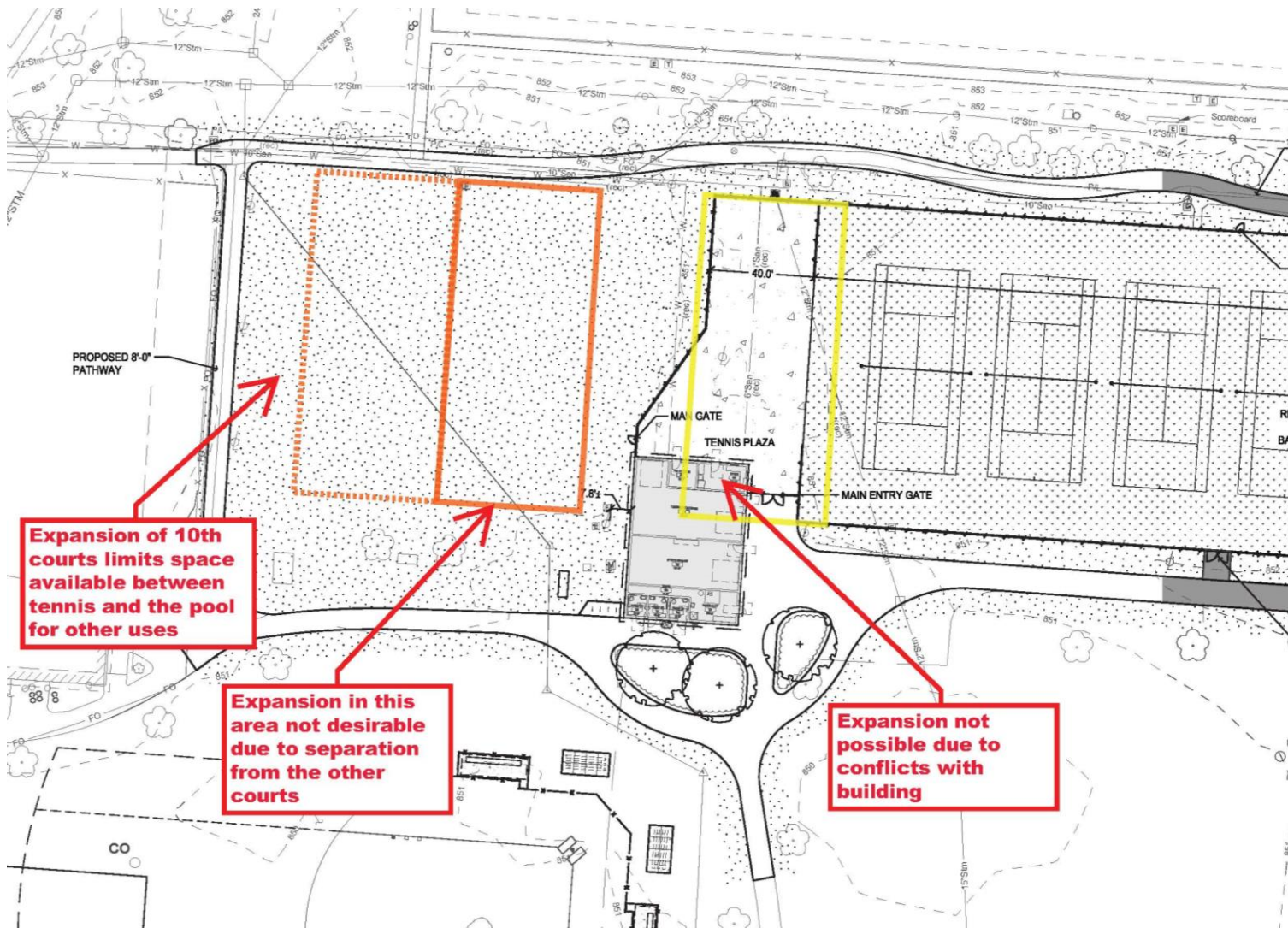
Fundraising Options

- 9th Tennis Court - \$100,000
- Tennis Shade Structures - \$50,000 Each
- Park Shelters - \$200,000 Ea.
- Funds needed by November



Challenges with Adding a 10th Court

- Building has been redesigned to fit between existing lights
- Building would need to slide south and central plaza eliminated
- Expansion to the west would limit space available for other uses
- Anticipate cost of expanding to the west to be about double the cost of expanding to the east due to utility relocation



Recommendation

Recommendation

8 courts can accommodate play and maintenance

Renovation budget supports 8 courts

Facility layout illustrates flexibility for 9th court

- Bid alternate give accurate overall cost and 9th court option
- Timing to add court is flexible
- Offers more play if cost estimates or any assessments are off

Determine best use of gained space



Discussion
