

Census 2020: Record growth and change in our communities.



United Way
of Central Ohio



***Our dilemma is that we hate change
and love it at the same time.***

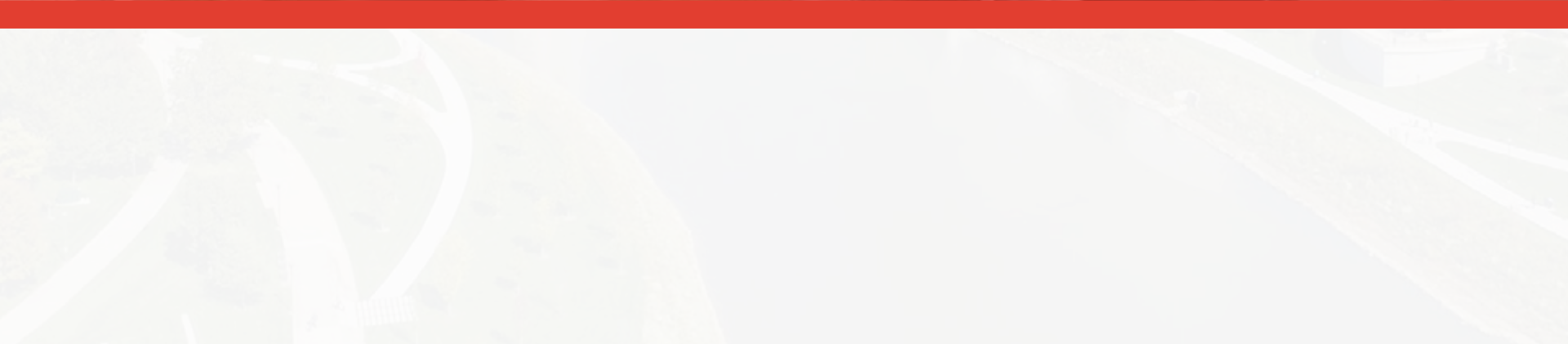
***What we really want is for things to
remain the same but get better.***



SYDNEY J. HARRIS



5721





Population Change, 2010 to 2021

A panoramic view of the Columbus, Ohio skyline, featuring several prominent skyscrapers under a clear blue sky.

+249,043

**Columbus
metro**



Population Change, 2010 to 2021

A panoramic view of the Columbus, Ohio skyline, featuring several prominent skyscrapers under a clear blue sky.

+249,043

**Columbus
metro**

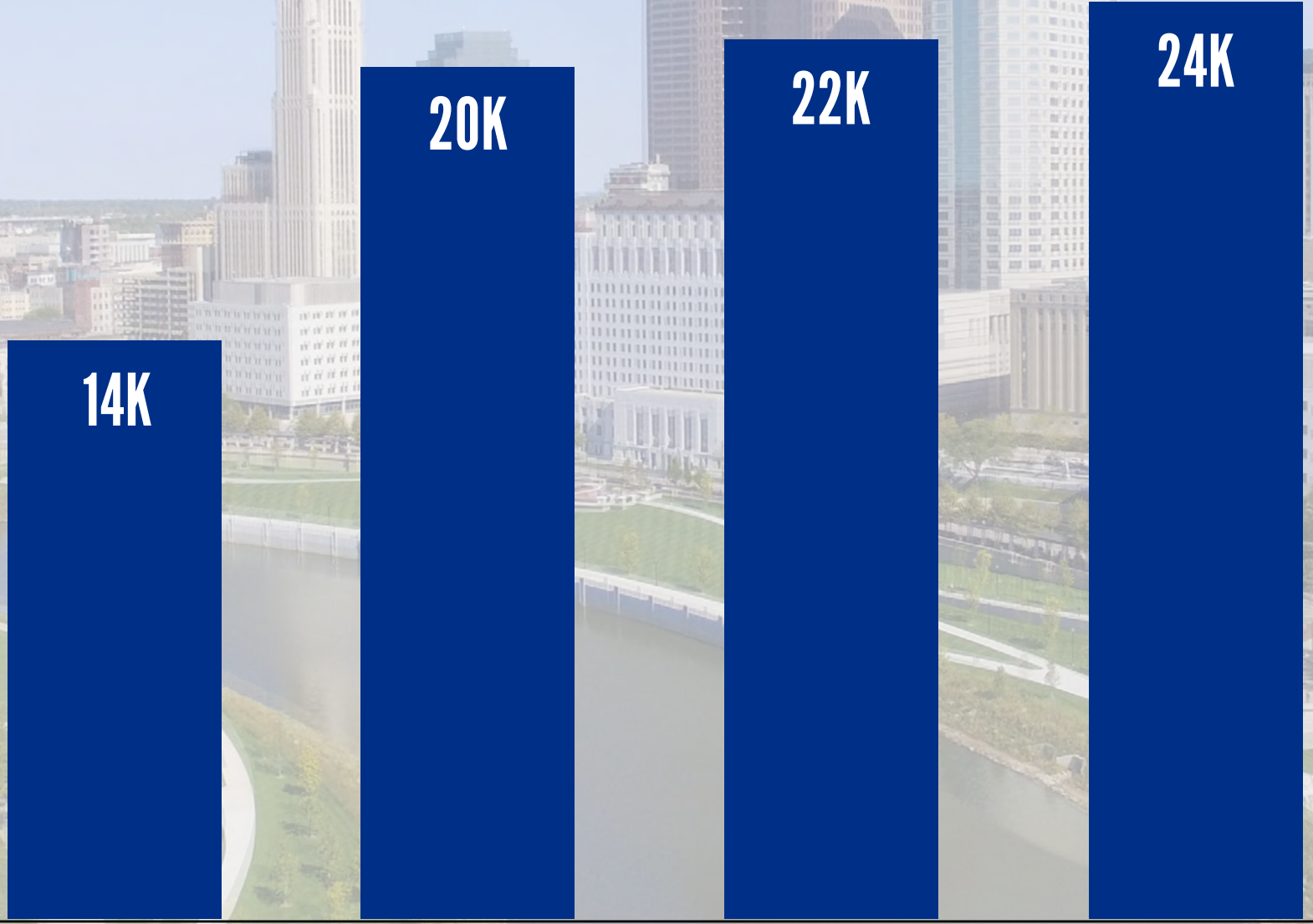
-5,530

**Ohio
Outside Columbus**

An aerial view of a park area with green grass, trees, and a paved path, situated near a body of water.

Average Annual Growth by Decade

20K
15K
10K
5K
0K



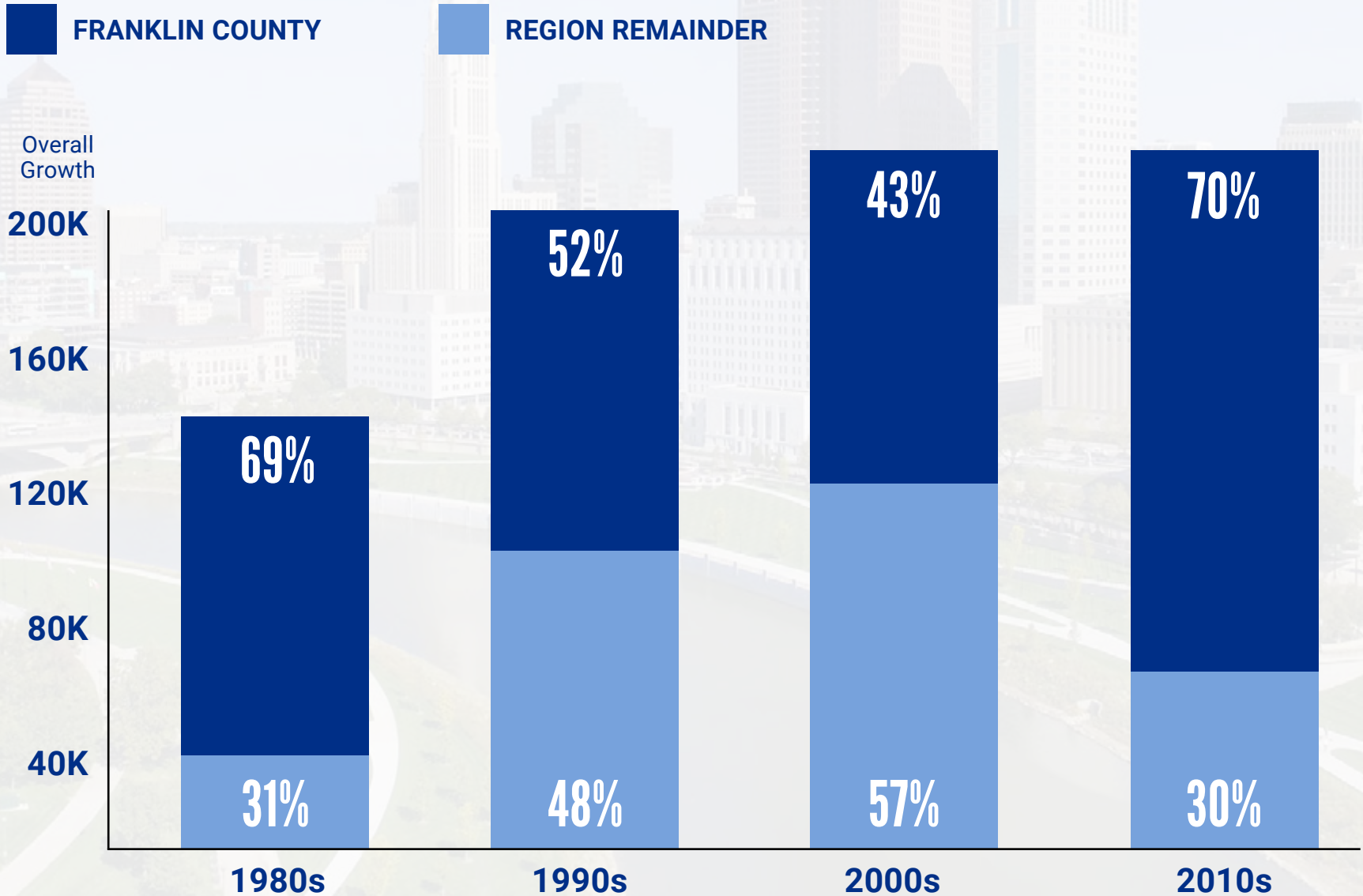
1980s

1990s

2000s

2010s

Proportion of Population Growth by Decade



City of Columbus – 2010 to 2020

**Total
Population**

905,748

**Highest
percentage
increase
since 1950s**

+15.1%

**Largest
numeric
increase in
history**

+118,715

Columbus' 15.1% surpassed sunbelt and west coast cities



Portland
11.8%



Houston
9.7%



Nashville
14.7%



Las Vegas
9.9%



D.C.
14.6%



Dallas
8.9%



Phoenix
11.2%



San Antonio
8%

2000 to 2010

2010 to 2020



+10.6%

+15.1%



+8.8%

+13.8%



+1.6%

+2.3%



+9.7%

+7.4%

Metro Population Growth, 2010 to 2020

FRANKLIN COUNTY

+13.8%

Dublin
+18%

Powell
+23%

Westerville
+9%

New Albany
+40%

Worthington
9%

Gahanna
+8%

Hilliard
+31%

U. Arlington
+9%

Columbus
+15%

Grandview H.
+24%

Bexley
+7%

Whitehall
+11%

Reynoldsburg
+15%

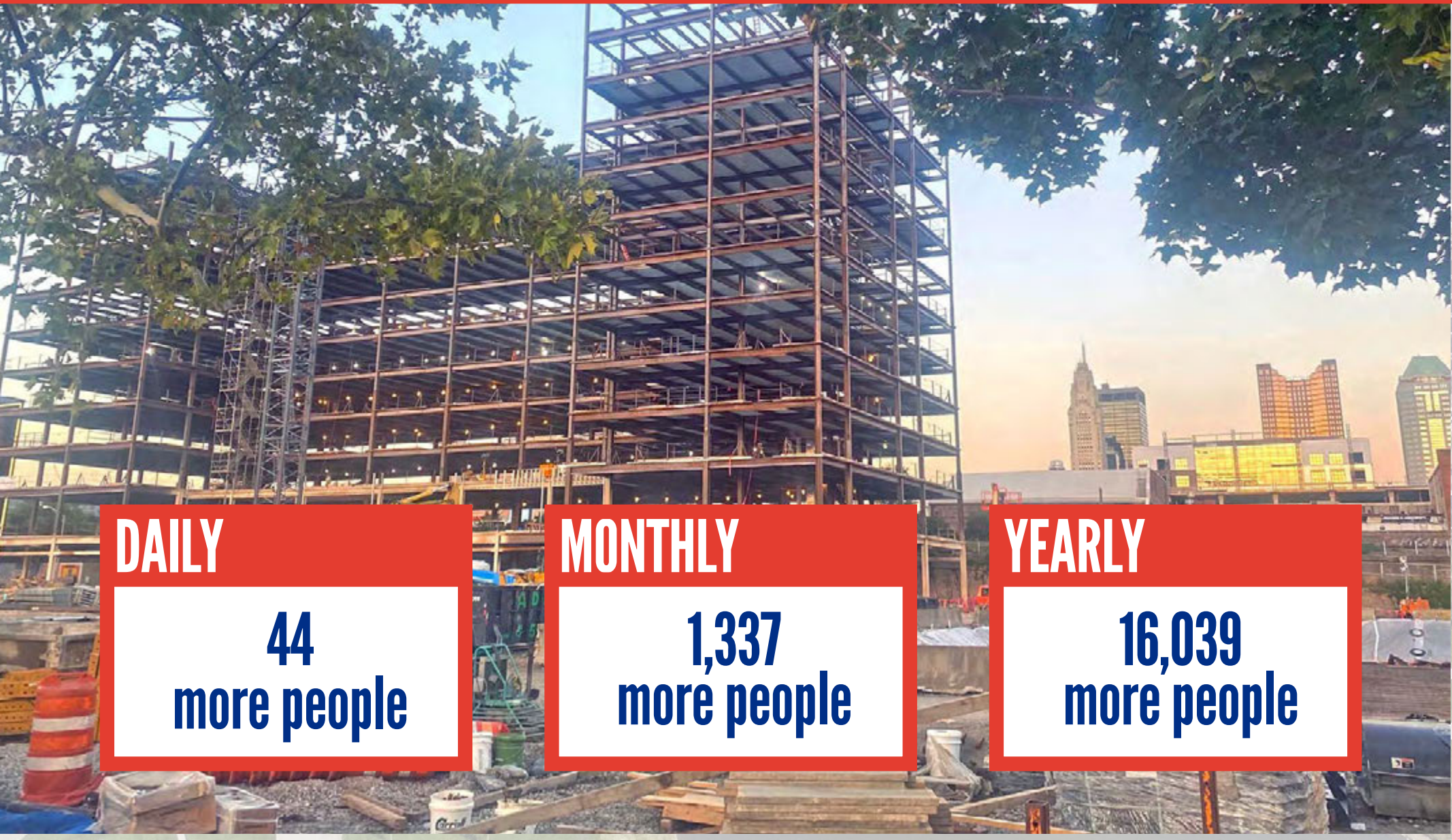
Grove City
+16%

Pickerington
+26%

Groveport
+12%

Canal Winch.
+28%

Franklin County's Growth



DAILY

**44
more people**

MONTHLY

**1,337
more people**

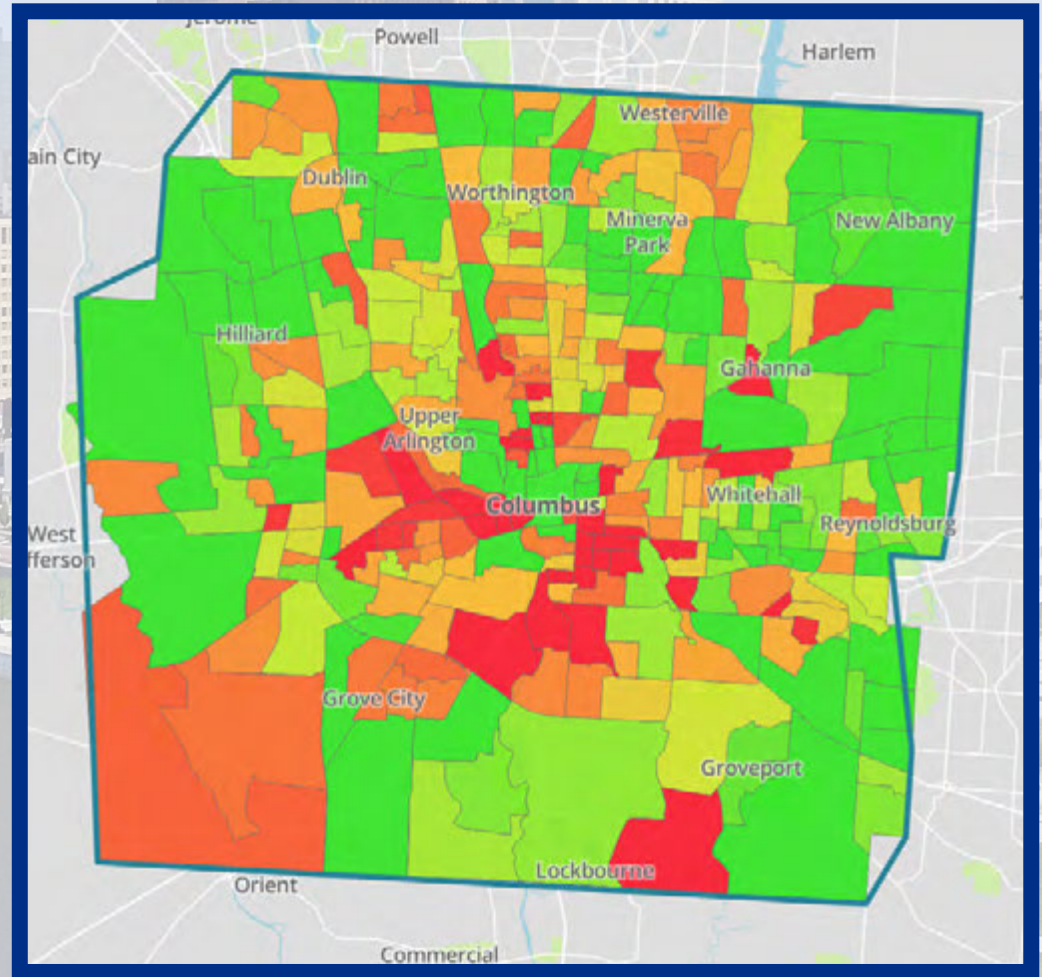
YEARLY

**16,039
more people**

Franklin County – Population Change

+13.8%
+160,383


**Growth overall, with isolated
areas of population loss**



● Less than -15 ● -15 to -10 ● -10 to -5 ● -5 to 0 ● 0 to 5 ● 5 to 10 ● 10 to 15 ● 15 to 20 ● More than 20

All of the
net growth
in the **City**
of Columbus
was due to
diversity.



An aerial photograph of Columbus, Ohio, showing the city skyline with various skyscrapers and a river in the foreground. The text is overlaid on a semi-transparent white background.

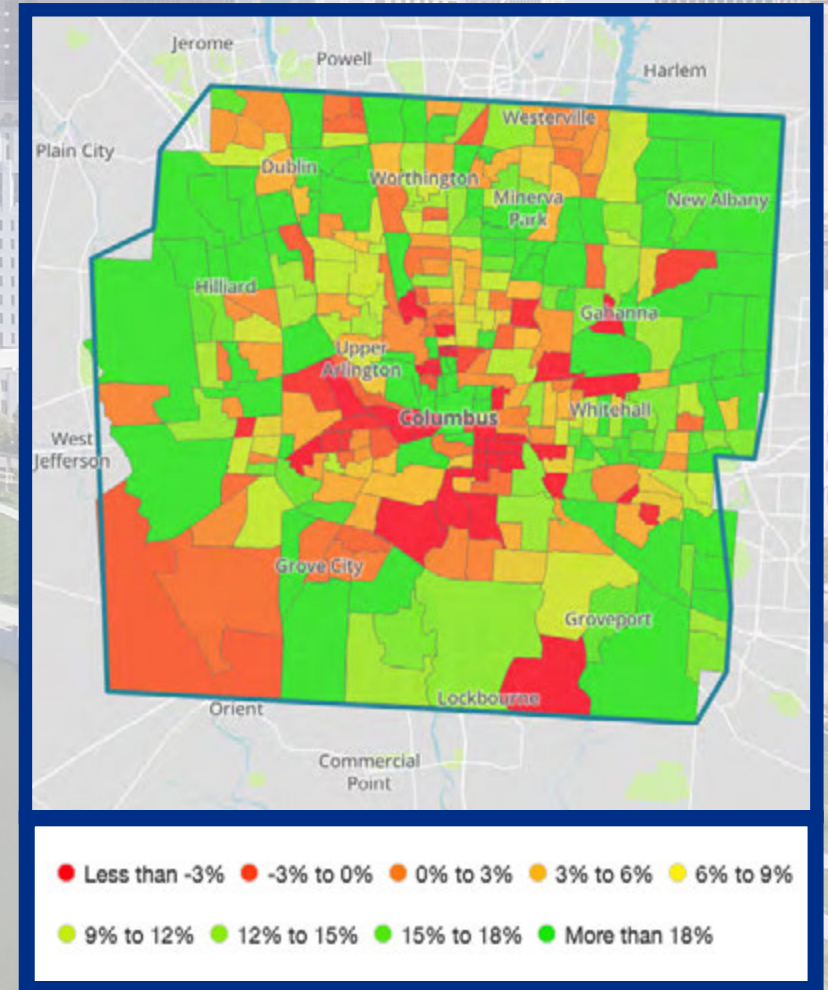
All of the net growth in the **City of Columbus** was due to diversity.

An aerial photograph of Franklin County, Ohio, showing the city skyline with various skyscrapers and a river in the foreground. The text is overlaid on a semi-transparent white background.

All of the net growth in **Franklin County** was due to diversity.

Franklin County Population by Race/Ethnicity

	2020	2010	CHANGE
TOTAL	1,323,807	1,163,417	+13.8%
White	802,685	805,618	-0.4%
Black	299,771	247,225	21.3%
Asian	74,071	44,996	64.6%
Other	49,083	27,272	80.0%
Two or more	93,099	34,706	168.3%
Hispanic*	91,182	55,718	63.6%



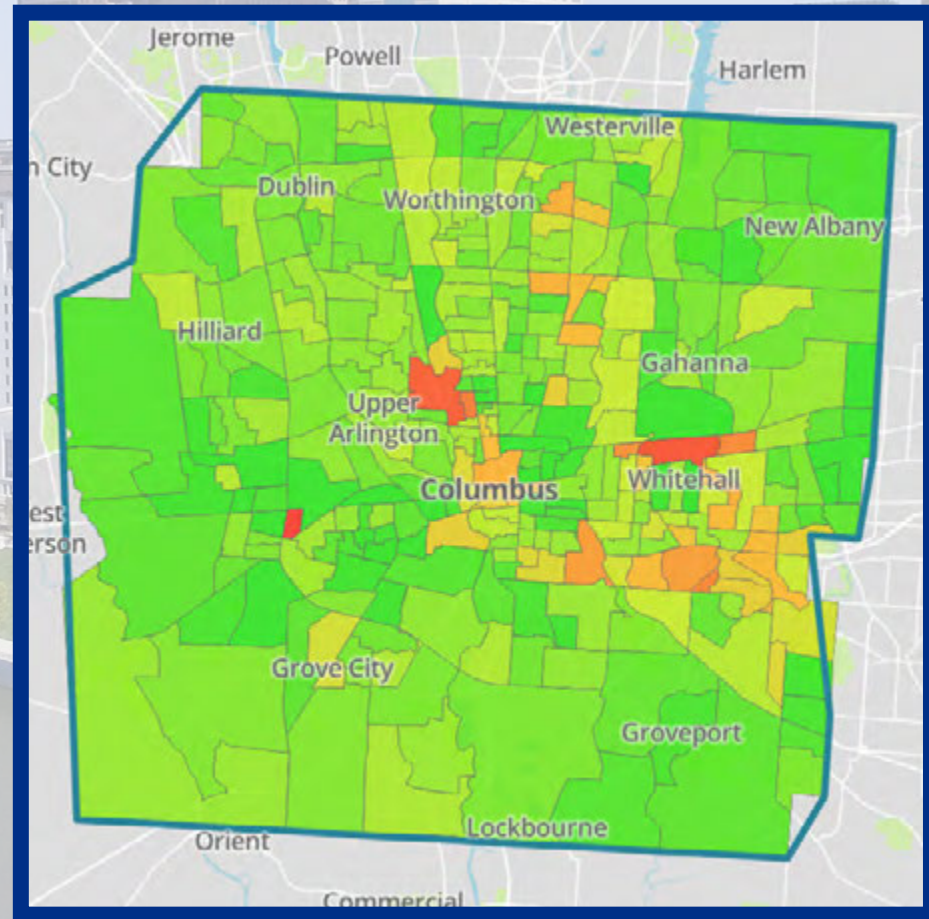
*of any race

Almost every census tract became more diverse.

Diversity index

2010: 50/100

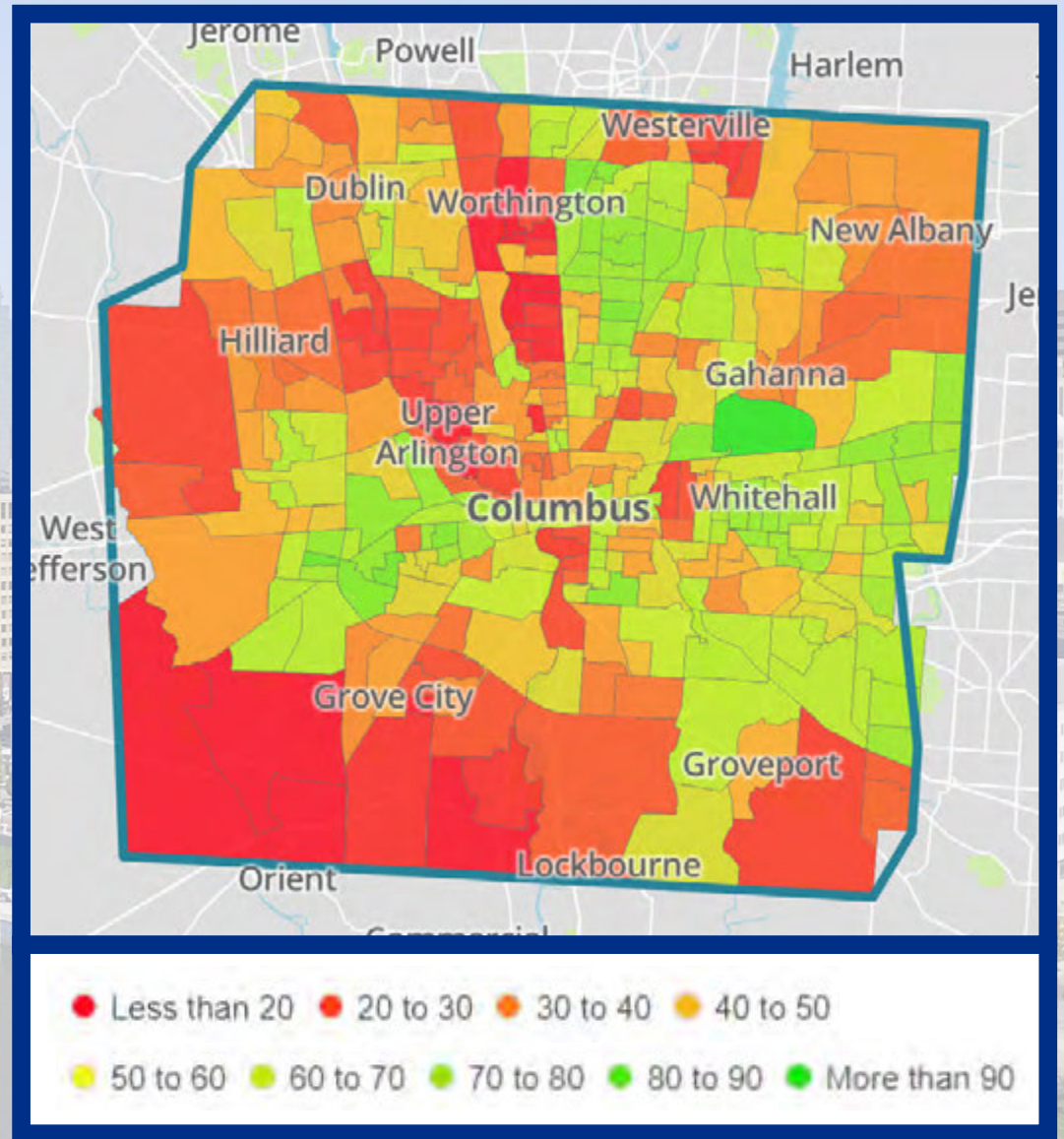
2020: 60/100



● Less than -15 ● -15 to -10 ● -10 to -5 ● -5 to 0 ● 0 to 5 ● 5 to 10 ● 10 to 15 ● 15 to 20 ● More than 20

Diversity Index reveals high degree of segregation.

The USA TODAY diversity index shows on a scale of 0 to 100 how likely it is two people from an area would have a different race or ethnicity.



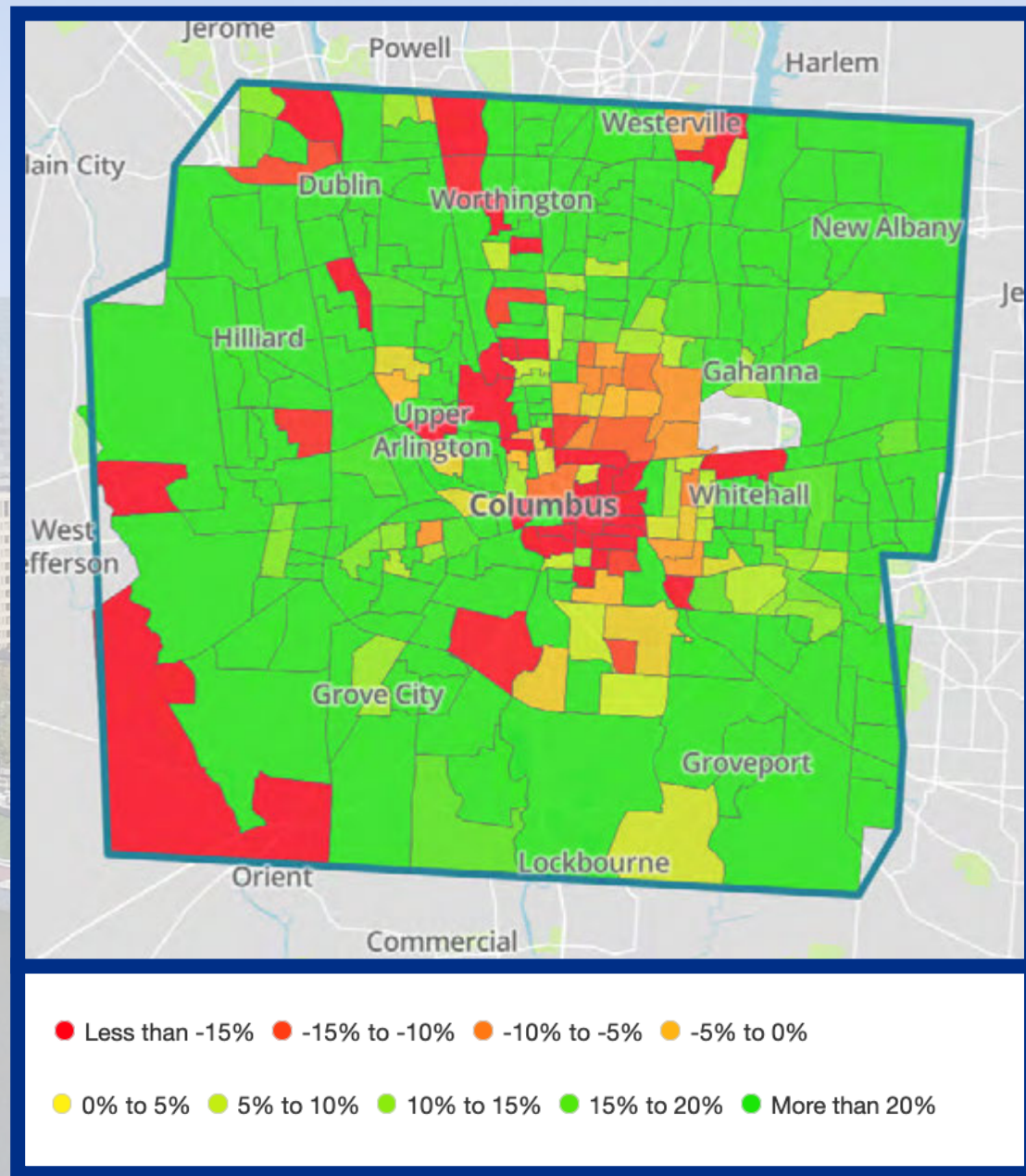
The higher the number, the greater the diversity.

Black Population surges in suburban areas and tumbles in central city

Total Black population 2010-2020

247,225 to 299,771

+21.3% up 52,546

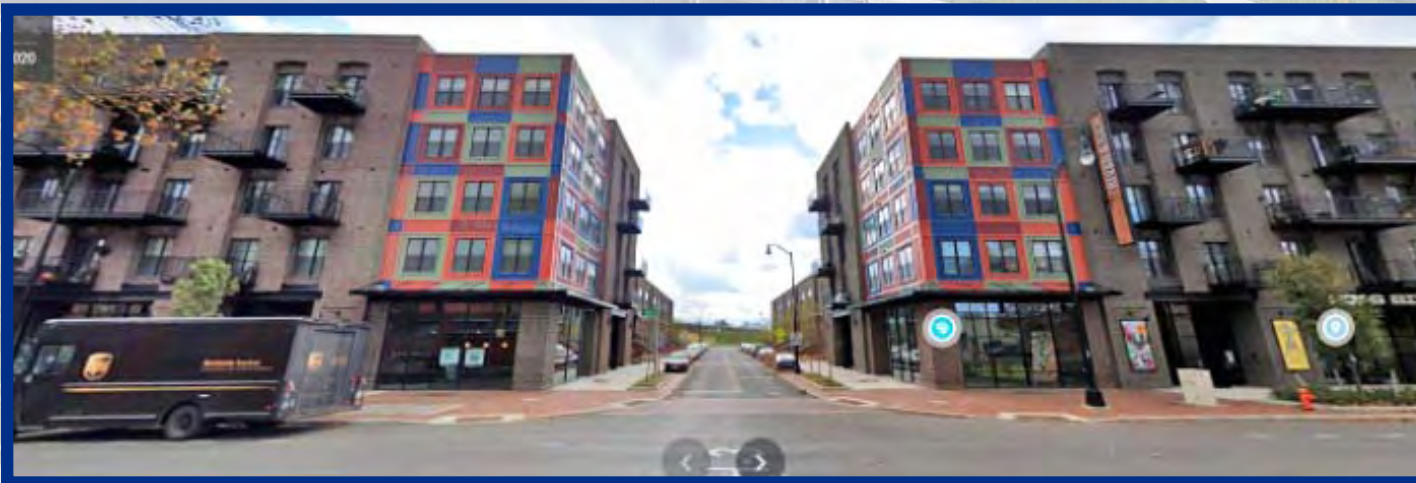


Across the central city the Black population fell in unprecedented numbers



**Near Northwest
Tract 11.12
-40.2%**

Franklinton: Tract 42: — 60.5%, Diversity Index 56-60



**Southside
Tract 57
-41.7%**

Black Population Migrates to Far Northeast Columbus near New Albany



Tract 72.14
Tract 72.09
Tract 72.15

+273%
+215%
+195%

Diversity Index: 38 to 50
Diversity Index: 40 to 59
Diversity Index: 28 to 43

BLACK POP.

875 to
2,809

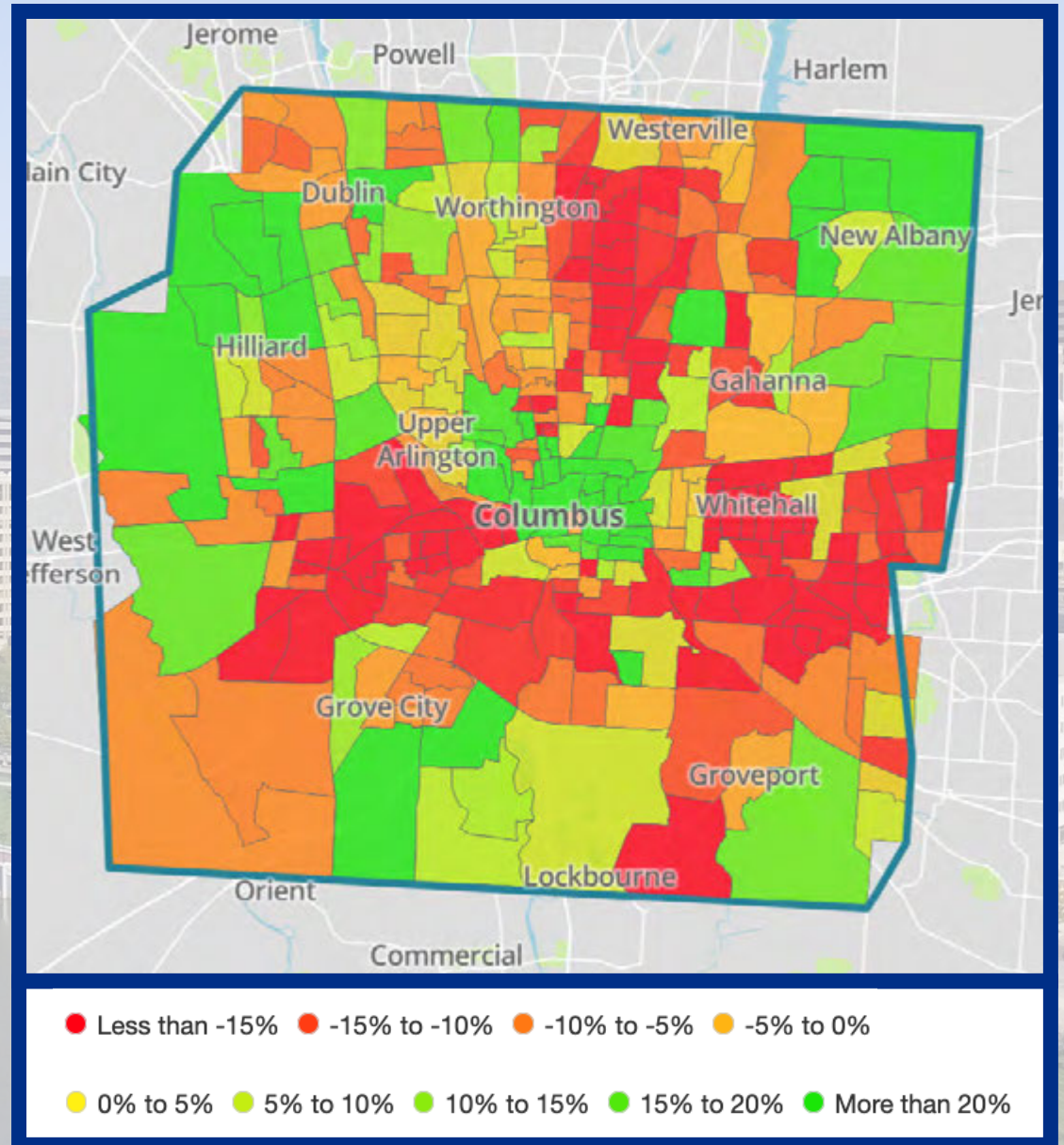
Considerable White Population Declining in Three Areas

Total White Population
2010 to 2020

805,618 to 802,685

-0.4%

Franklin County: White
69.2% to 60.6%



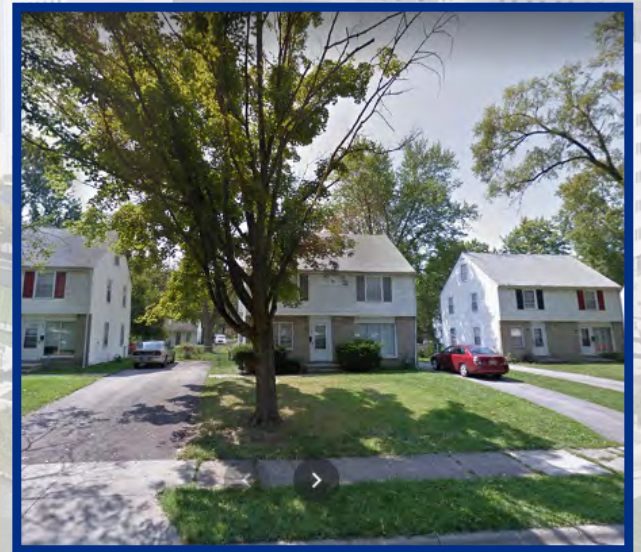
Northland • West Side • Far East

Largest Decrease in White Population

Whitehall: Tract 92.51
-72% **Diversity Index: 69 to 59**

Eastland: Tract 93.26
-61% **Diversity Index: 59 to 54**

Northland: Tract 69.31
-42% **Diversity Index: 58 to 68**



Significant white population increase across previously redlined and segregated neighborhoods

Near East Side: Tract 29

+208%

Diversity Index: 26 to 42

South of Main: Tract 54.10

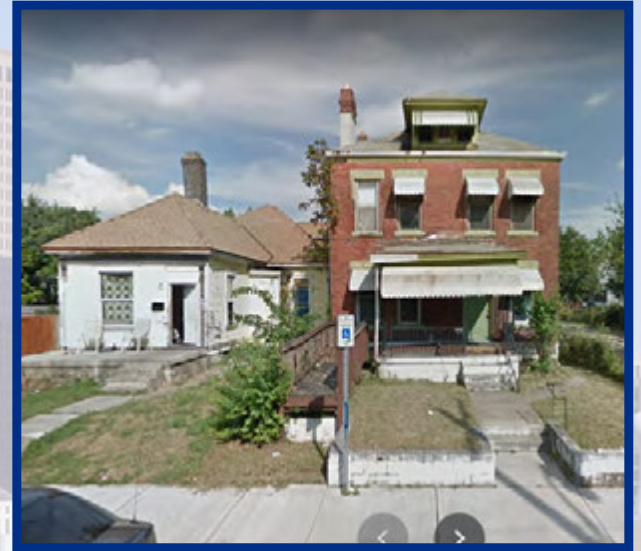
+196%

Diversity Index: 21 to 51

Downtown: Tract 40.02

+172%

Diversity Index: 56 to 58

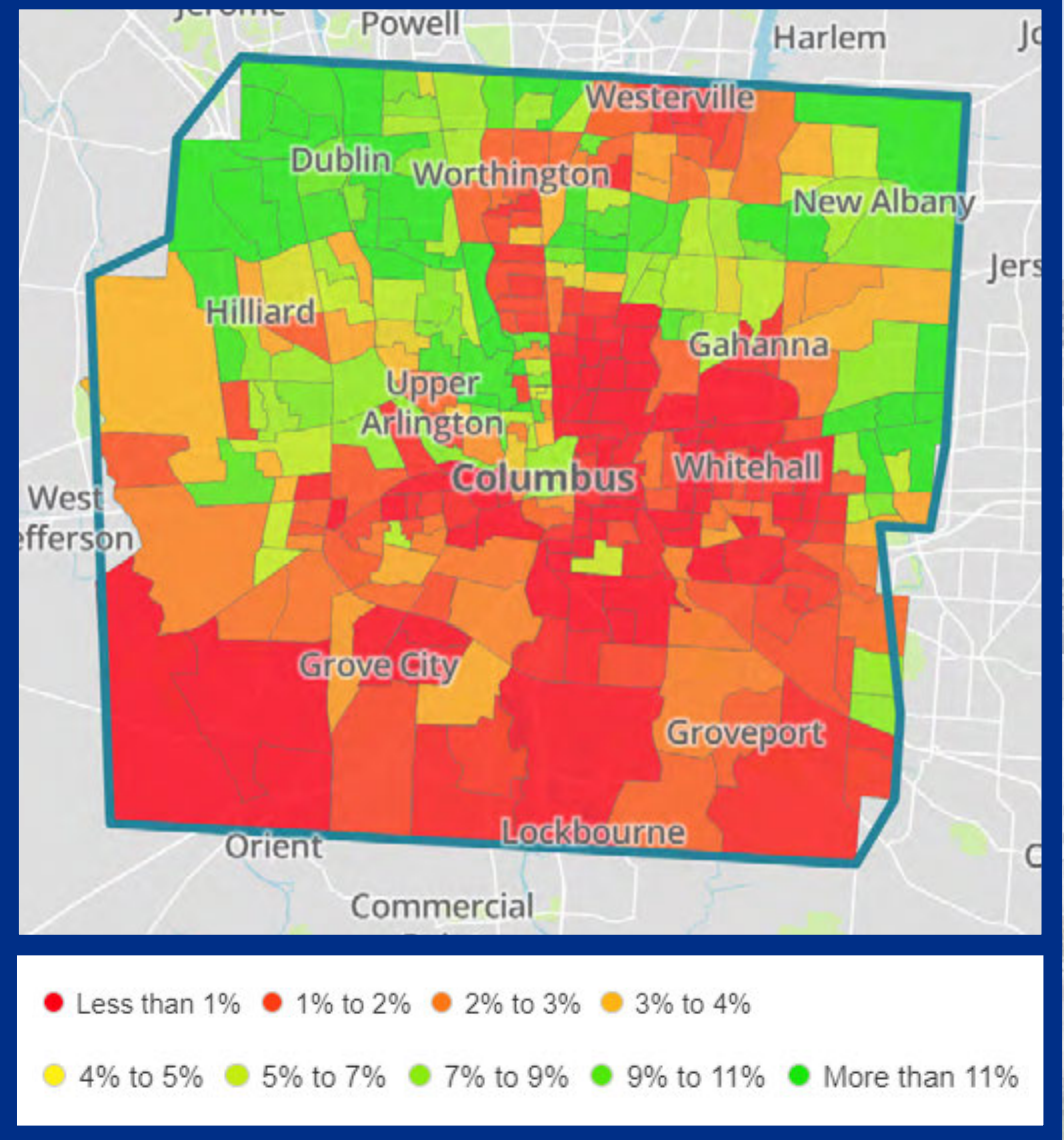


Asian population jumps 65%

Grows from
44,996 to 74,701

Franklin County
2010: 3.9%
2020: 5.6%

MAP: Asian Population 2020



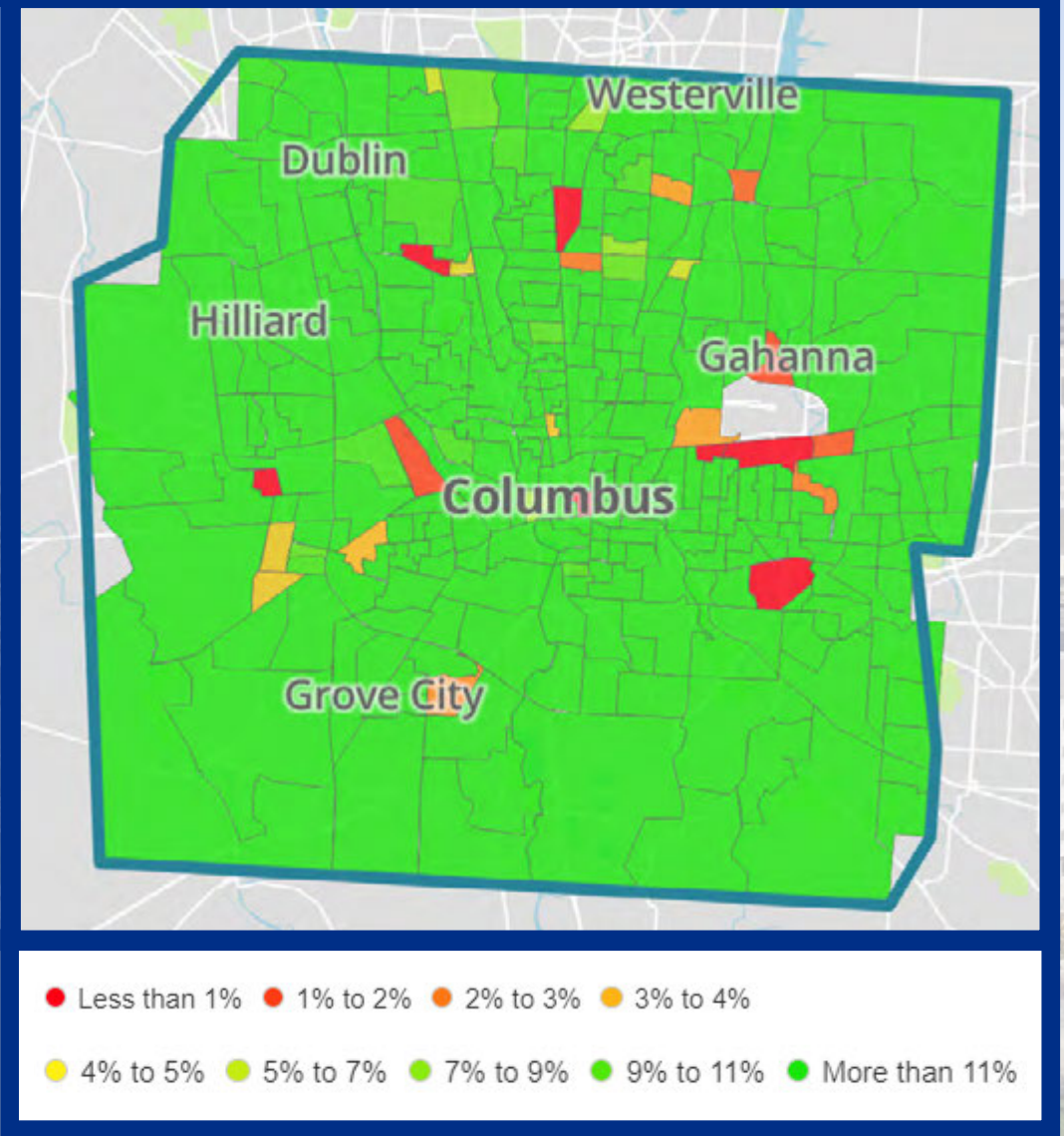
NW Columbus • Campus • Dublin • Northland •
New Albany • Far East Columbus

Hispanic or Latino population jumps 64%

Grows from
55,718 to 91,182

Franklin County
2010: 4.8%
2020: 6.9%

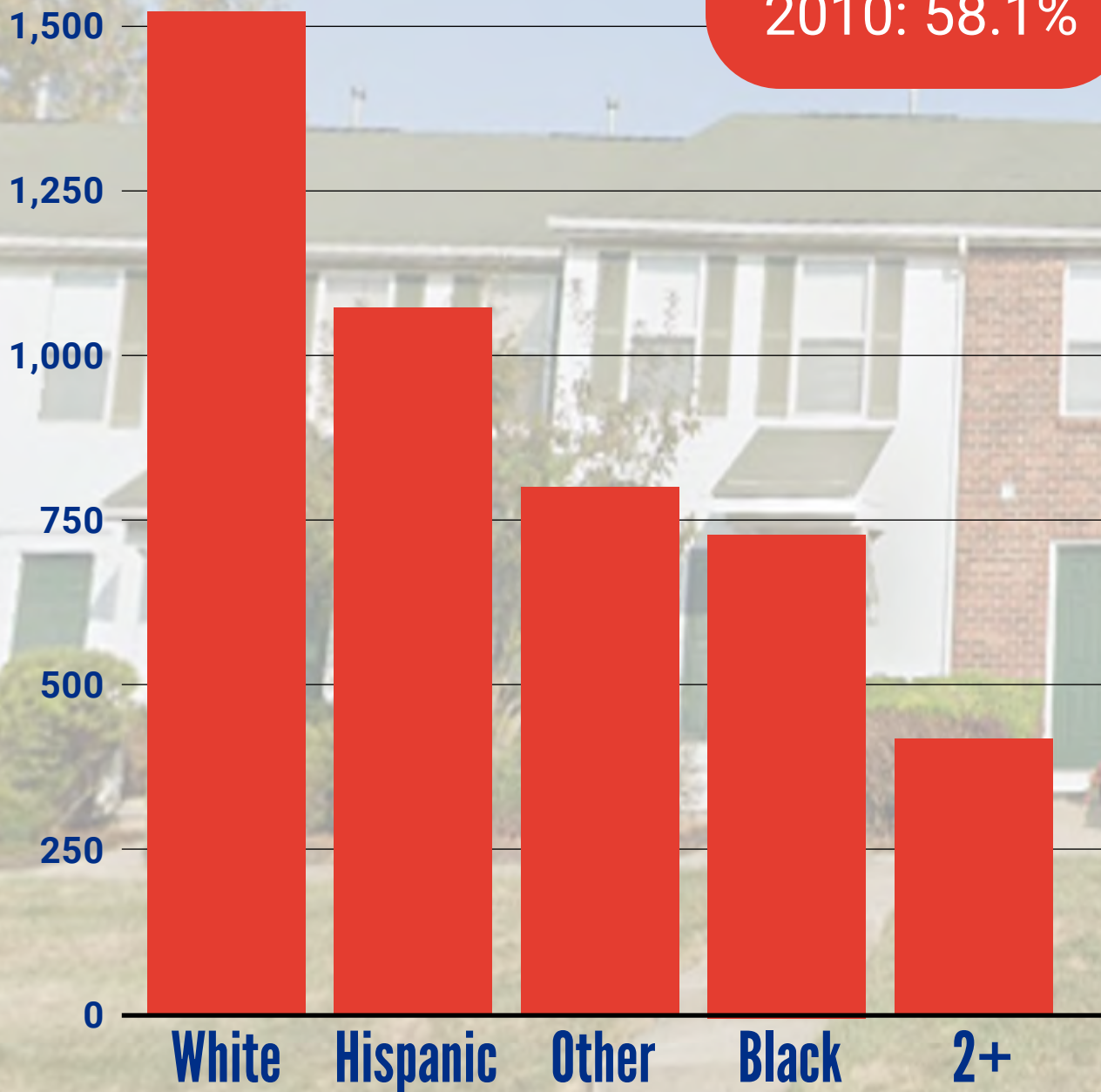
MAP: H or L Population 2020



% White
2020: 43.9%
2010: 58.1%

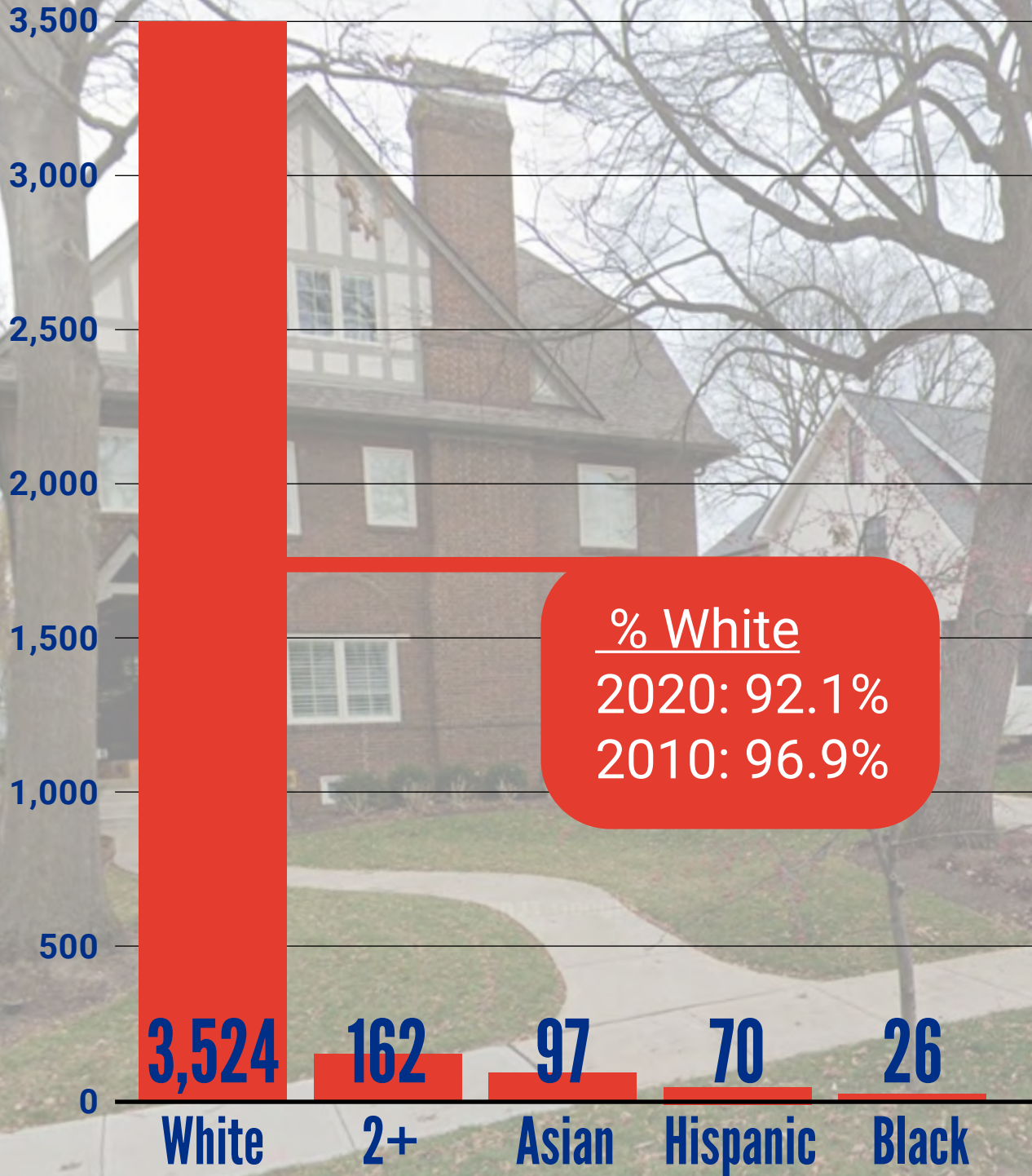
**Far West Side of
Columbus Outside
270- South of West
Broad is the most
diverse place in
Franklin County**

**Tract 81.63
Diversity Index:
78/100**



Upper Arlington South of Lane Avenue is the Least Diverse Place in Franklin County

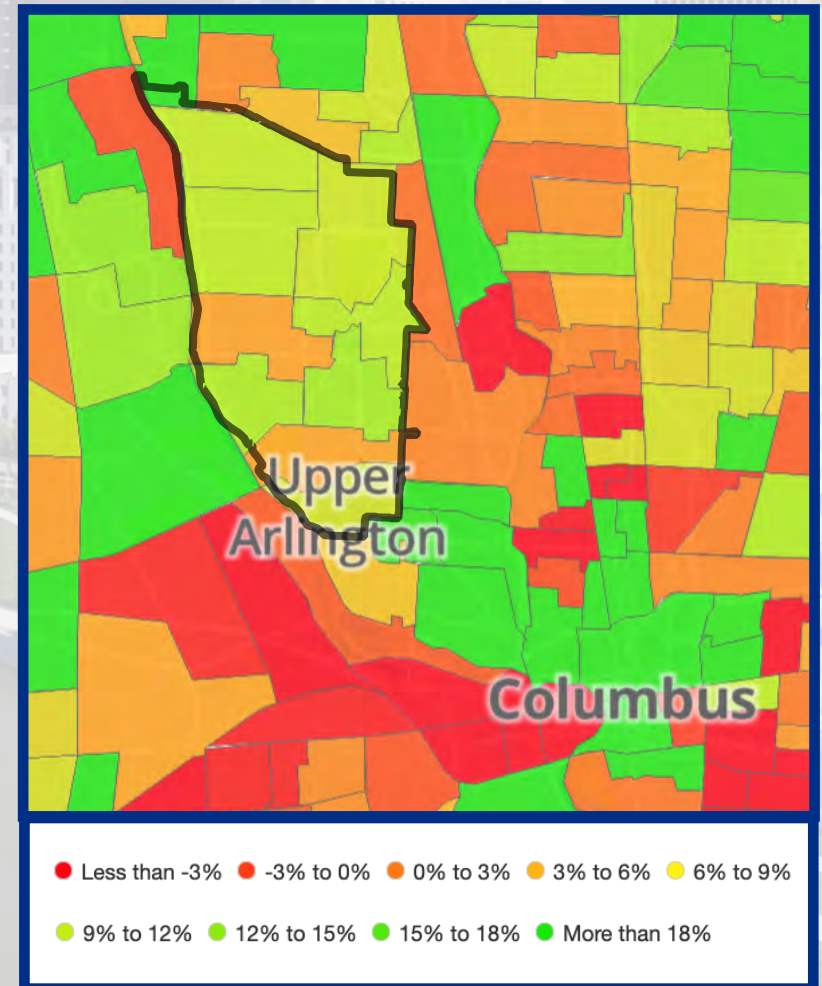
**Tract 65 Diversity
Index: 17/100**



Upper Arlington Population by Race/Ethnicity

	2020	2010	change
Total:	36,800	33,771	+9.0%
White	32,110	32,198	-0.2%
Black	377	277	+36.1%
Asian	2,321	1,673	+38.7%
Other	216	133	+62.4%
Two or more*	2,046	565	+262.1%
Hispanic	884	555	+59.3%

*of any race



Change in 2010-2020 Population of UA Compared to Franklin County

Change 2010-20	UA	Franklin County
Total pop	+9.0%	+13.8%
White	-0.2%	-0.4%
Black	+36.1%	+21.3%
Asian	+38.7%	+64.6%
Other	+62.4%	+80.0%
Two or more	+262.1%	+168.1%
Hispanic (any race)	+59.3%	+63.6%

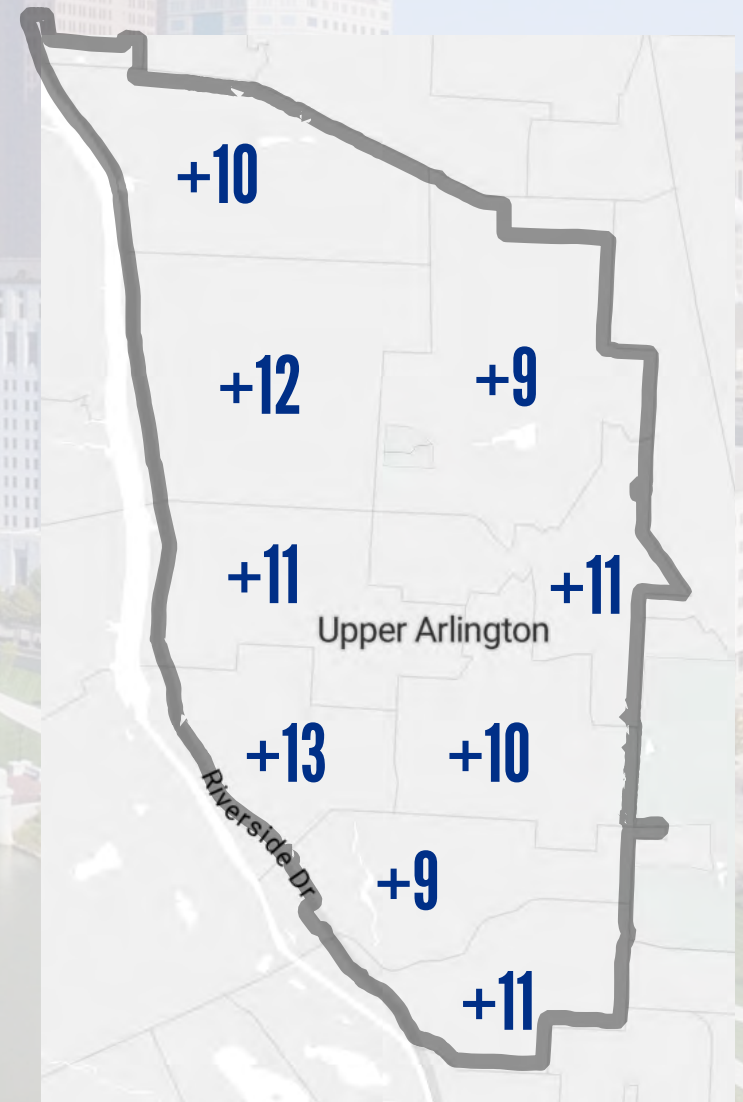
Racial Composition 2020 UA Compared to Franklin County

Race	Franklin County	UA
White	60.6%	86.5%
Black	22.6%	1.0%
Asian	5.6%	6.3%
Other	3.7%	0.6%
Two or more	7.0%	5.5%
Hispanic (any race)	6.9%	2.4%

Change in Diversity Index 2010-2020

UA

Tract	2020 Diversity Index	2010 Diversity Index	Change
66	21	10	+11
65	17	8	+9
64.3	33	23	+10
64.1	26	13	+13
63.23	31	20	+11
63.3	28	17	+11
63.21	28	19	+9
63.1	26	14	+12
63.4	35	25	+10



Comparison of Select Suburban Communities 2020

2020	Dublin	New Albany	Bexley	Grandview Heights	Upper Arlington	Franklin County
TOTAL	49,085	10,854	13,681	8,253	36,800	1.32M
White	70.0%	73.5%	82.5%	85.3%	86.5%	60.6%
Black	2.2%	7.5%	8.1%	1.2%	1.0%	22.6%
Asian	19.9%	7.5%	2.6%	1.1%	6.3%	5.6%
Two or More	3.9%	7.7%	4.4%	10.0%	5.5%	7.0%
Hispanic (any race)	5.0%	6.2%	2.9%	3.2%	2.4%	6.9%
Home Value, Aug. 2022	\$551K	\$570K	\$539K	\$520k	\$604K	\$284K

What the 2020 census tells us

POPULATION GROWTH

- Regional growth consistent with previous decades
- Regional growth shifted inward into Franklin County
- Neighborhoods previously losing population now gaining

DIVERSITY

- Significant increase in diversity in suburban Columbus & suburbs
- Significant increase in white people living in central city
- All of Columbus/Franklin County net growth is due to diversity

HOUSING

- Inadequate housing construction (units/types) to meet growth
- Dramatic decrease in vacant housing
- Housing cost will likely escalate



**United
Way**



**United Way
of Central Ohio**

Michael Wilkos • Senior Vice President, Community Impact • 614.477.8918 • michael.wilkos@uwcentralohio.org