



Meeting 2

UA Community Center Feasibility Study
January 8, 2020

Work Group Meeting 2

1. Project Updates

- Schedule
- Scope

2. Review Engagement 1.0

- Stakeholder Interviews
- Stakeholder Focus Groups
- Pop-Ups
- Preliminary Survey Development
- Engagement Subcommittee – Next Steps

3. Survey



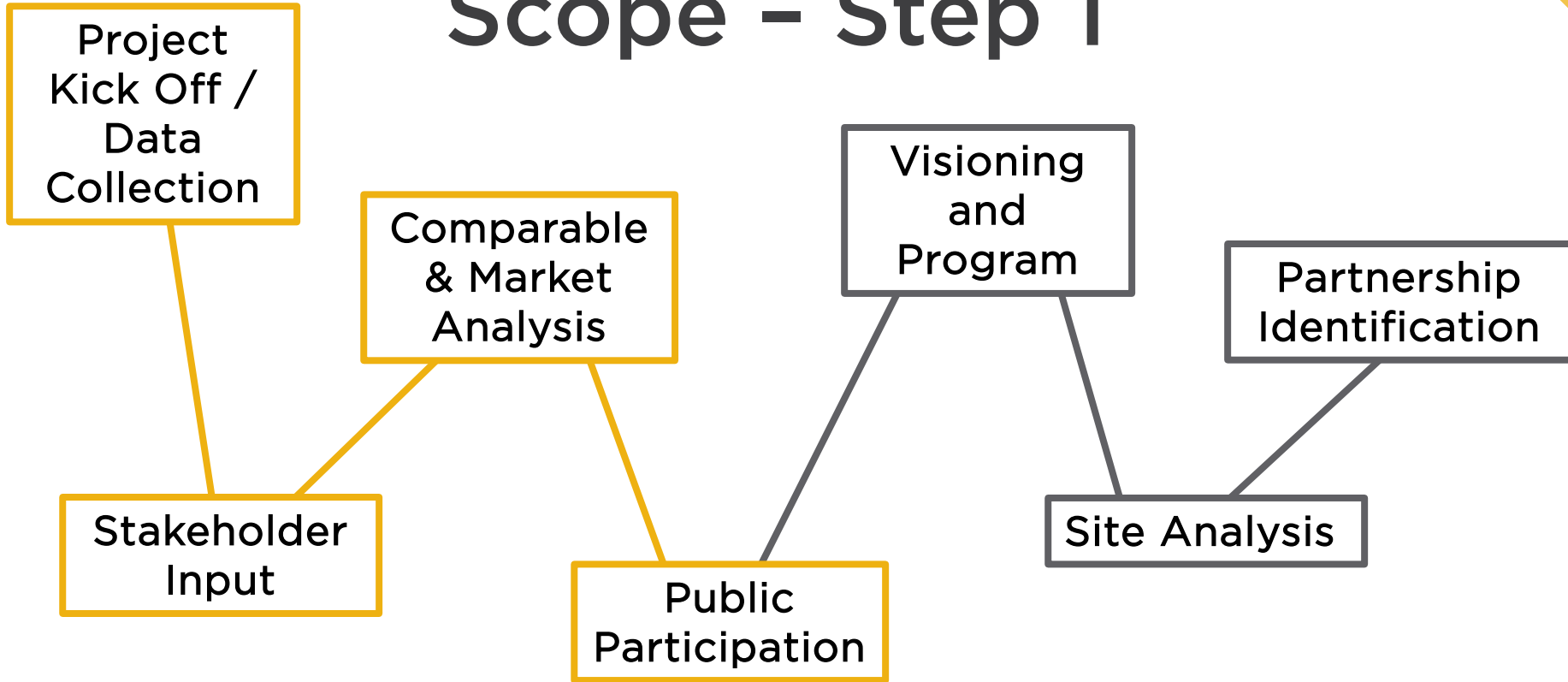
WINDERMERE

SCHOOL

Project Updates



Scope - Step 1



Schedule January - March

Work Group 2/Task Force 2	<i>Today!</i>
Comparable & Market Analysis	<i>January 20-24</i>
Stakeholder Interviews	<i>January 20-31</i>
Pop-Ups	<i>January 27 and 31</i>
Focus Groups	<i>February 5-6</i>
Work Group 3/Task Force 3	<i>February 19 (WG on 2/18?)</i>
Youth Engagement	<i>TBD (February 24-28)</i>
Community Meeting 1	<i>TBD (February 24-28)</i>
Community Survey (Statistically Valid)	<i>February 24 - March 27</i>
Community Survey (Online)	<i>March 9 - March 27</i>

WINDERMERE

SCHOOL

Review Engagement 1.0



An aerial photograph of a city street grid is overlaid with a semi-transparent orange filter. Several hands are visible, interacting with the map. Numerous yellow and pink sticky notes are placed across the map, containing handwritten notes and diagrams. One note in the center reads 'Solve the problem by talking to the community'. Another note to the right says 'The biggest challenge is to get the community to work together'. A third note at the bottom left says 'Participate on both sides of the street'. A fourth note at the top right says 'Support the community to work together'. A fifth note at the bottom right says 'The biggest challenge is to get the community to work together'. A sixth note at the top center says 'Support the community to work together'. A seventh note at the bottom center says 'Solve the problem by talking to the community'. A eighth note at the top left says 'Support the community to work together'. A ninth note at the bottom right says 'The biggest challenge is to get the community to work together'. A tenth note at the top right says 'Support the community to work together'. A eleventh note at the bottom left says 'Participate on both sides of the street'. A twelfth note at the top center says 'Support the community to work together'. A thirteenth note at the bottom right says 'The biggest challenge is to get the community to work together'. A fourteenth note at the top right says 'Support the community to work together'. A fifteenth note at the bottom left says 'Participate on both sides of the street'. A sixteenth note at the top center says 'Support the community to work together'. A seventeenth note at the bottom right says 'The biggest challenge is to get the community to work together'. A eighteenth note at the top right says 'Support the community to work together'. A nineteenth note at the bottom left says 'Participate on both sides of the street'. A twentieth note at the top center says 'Support the community to work together'.

Stakeholder Interviews

Stakeholder Interviews

- **When:** January 20 - 31
- **Where:** Phone interviews
- **Lead:** PROS
- **What:** 20-minute discussion; 1-2 people per interview

Stakeholder Interviews

1. **4 - 5 Health and Wellness Providers**
2. **4 - 5 Employers**
3. **Joe Anastasi**, Senior Advisory Council
4. **Cricket Kirk & Judy Yesso**, Cultural Arts Commission
5. **Matt Peterson & Kate Diday**, Parks and Recreation Advisory Board
6. **Beth Hatch and Kate Porter**, Upper Arlington Public Library
7. **Mike Fitzpatrick/Tracey**, Upper Arlington Community Foundation
11. **Paul Imhoff and Chris Potts**, Upper Arlington City Schools
12. **Lori Wengerd and Katie White**, Upper Arlington Commission on Aging
11. **Paul Imhoff and Chris Potts**, Upper Arlington City Schools
12. **Lori Wengerd and Katie White**, Upper Arlington Commission on Aging
13. **Andy Geistfeld**, UA Schools
14. **Steve Schoeny**, City Manager
15. **Debbie McLaughlin**, Parks and Recreation Director
16. **Matt Leber**, Recreation Superintendent and **Patrick Monaghan**, Recreation Manager
17. School Resource Officer, **Christine Leyshon**, CARES Manager
18. YMCA - Tony Collins/Brandi Braun
19. **Alice**, UA Educational Foundation

Key Questions - DRAFT

- Please describe your affiliation with the Department's facilities and programs. What facility(ies) do you use currently and how do you use them?
- What are the strengths of the Upper Arlington system in terms of facilities and programs?
- What programs should be offered in a community center, if developed?
- What recreation spaces are most needed in a new community recreation center?

Key Questions Cont. - DRAFT

- What do you think will be the most critical element in getting this facility built that we need to make sure gets addressed in this feasibility study?
- What are the key partnerships that should be considered (development and operations)?
- What ideas do you have about funding the advancement of the facility?
- Any other questions, concerns, comments, suggestions?
- Would your organization be interested in exploring the opportunity to partner with the City ...(*employer specific question*)

Stakeholders - What's next?

1. City to refine draft invite letter
2. City to send invitation letter by January 10th
3. PROS to follow-up and coordinate “sign-up” of stakeholders

Focus Groups

- **When:** February 5-6
- **Where:** Cohatch? City Hall?
- **Lead:** OHM
- **What:** 1-hour discussion; 8-12 people per group; 6 groups

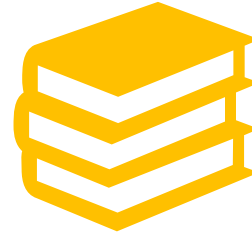
Focus Groups Categories



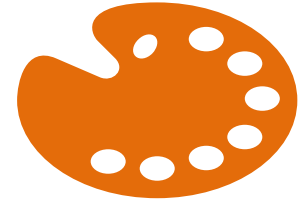
Parks/Instructor



Community
Groups



Schools/
Early Edu.



Arts and
Culture



Seniors



Chamber/Biz



Active Sports

Key Questions - DRAFT

Start with context slides/pres.

1. Would your organization benefit from having access to a community center, if so how?
2. What should be included in a community center?
3. What current challenges do you have in finding space for programming or events?
4. What questions or concerns would you have as planning for a community center continues?

Focus Groups - What's next?

1. OHM to develop draft invitation letter
2. City to send invitation letter by January 14th
3. City to coordinate RSVPs and schedule location

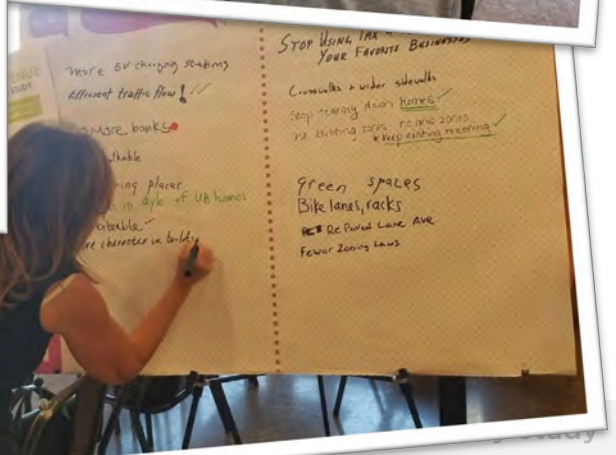


Community Pop-Ups

Community Pop-Ups

- **When/Where:**
 - State of the City (1/27 – 5:00-7:00)
 - HS BBall Game (1/31 – 6:30-8:30)
 - Others led by subcommittee
- **Lead:** OHM, Task Force
- **What:** Activity boards with key questions for project

Activities



Key Questions - DRAFT

- What types of facilities do you use now? (post its)
- What types of facilities or activities would you like to see in a community center? (dots)
- Would location of the community center impact your level of support? (on a scale 1-10)
- What is your level of support for a community center (Rating scale)? (on a scale)
- If a community center is constructed, how would you like to see it funded? (General Fund, Issuing of bonds, Business Partnership, Membership, Rentals). **Example Choices:**
 - Yes, Only if taxes are not raised
 - Yes, Only through a public/private partnership
 - Yes, Through some tax increase, supported with public/private partnership

Pop-Ups - Next Steps

- Schedule call with Engagement Subcommittee (Week of January 20th)
 - Identify additional pop-up opportunities
 - Train committee members on facilitating pop-ups



Preliminary Survey Development

Community Survey

- **When:**
 - February 24 – March 27 (Statistically Valid)
 - March 9 – March 27 (Online)
- **Lead:** PROS
- **How:** Mailed Survey (Statically Valid);
Online (Community Wide)

Discussion