



An aerial photograph of a park. In the foreground, there are four blue tennis courts. To the right, a green baseball field is visible. A river flows through the upper right portion of the image. The park is surrounded by dense green trees and some residential buildings are visible in the background.


Welcome to the **2020** **State of the City Address**



Back row left to right: Council Vice President Brendan King, Council President Kip Greenhill, Council Members Michaela Burriss and Brian Close, Front row: Council Members John Kulewicz, Michele Hoyle and Jim Lynch

Introducing City Manager **STEVE SCHOENY**





STATE OF THE CITY


ADDRESS



NATE



GEOFFREY



STATE OF THE CITY

ADDRESS



ORGANIZATIONAL EXCELLENCE



2019 Citizen Financial Review Task Force

- ❖ **Recommendations from 2014**
- ❖ **Firm Financial Footing**

Continuous Improvement

❖ **Performance Audit**

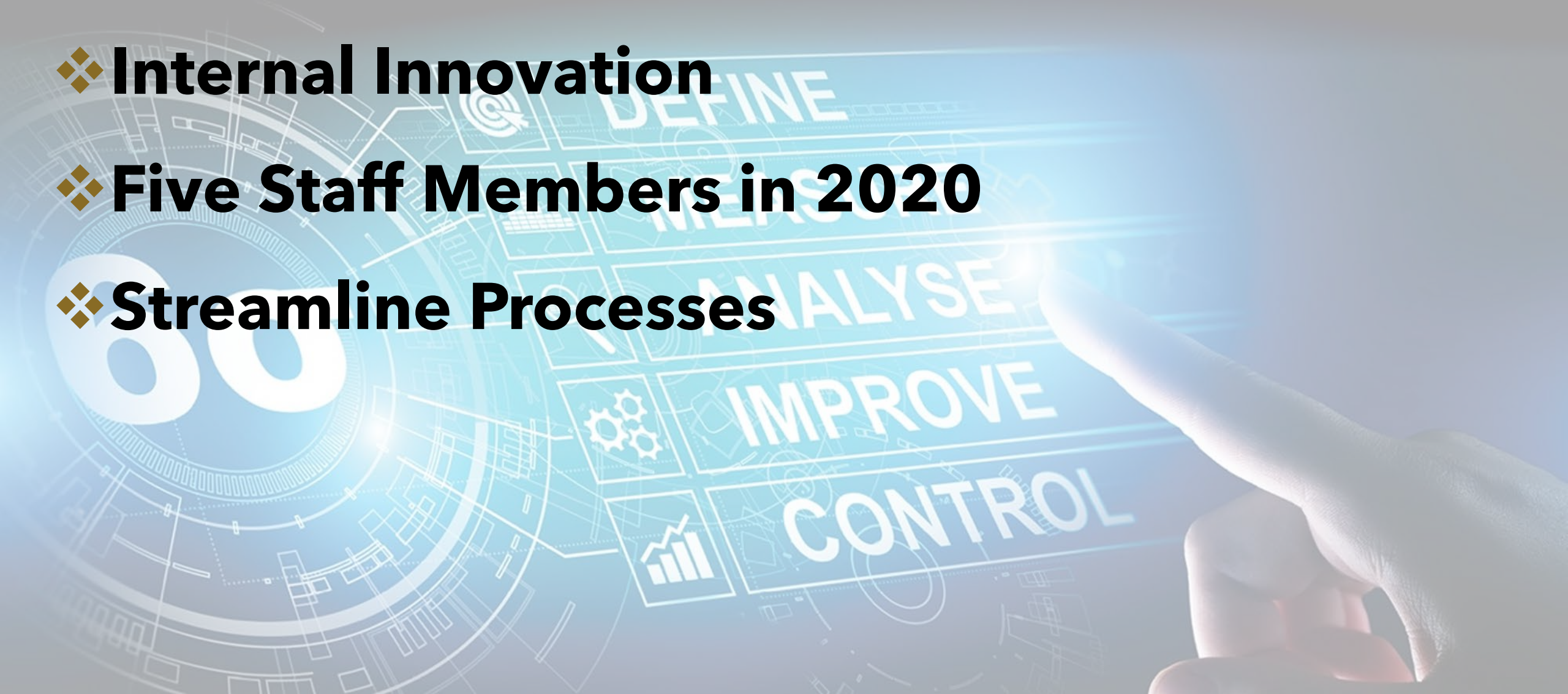
❖ **Strategic Plan for Economic Development**

❖ **Structure of Public Safety Department**



Lean Six Sigma

- ❖ **Internal Innovation**
- ❖ **Five Staff Members in 2020**
- ❖ **Streamline Processes**



Communications & Engagement

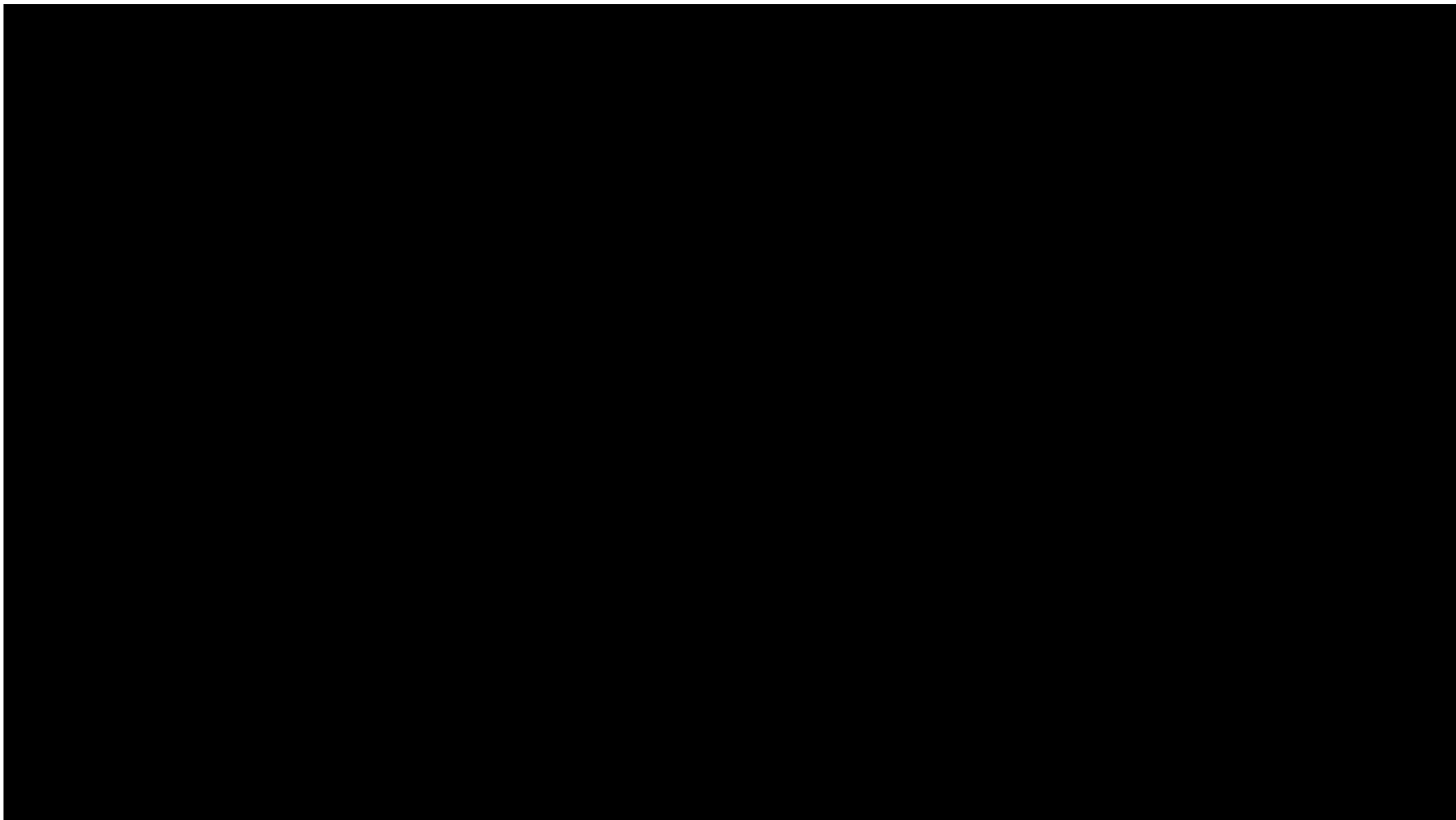


City Branding

❖ **New City Logo and Brand**

❖ **New UA Flag**



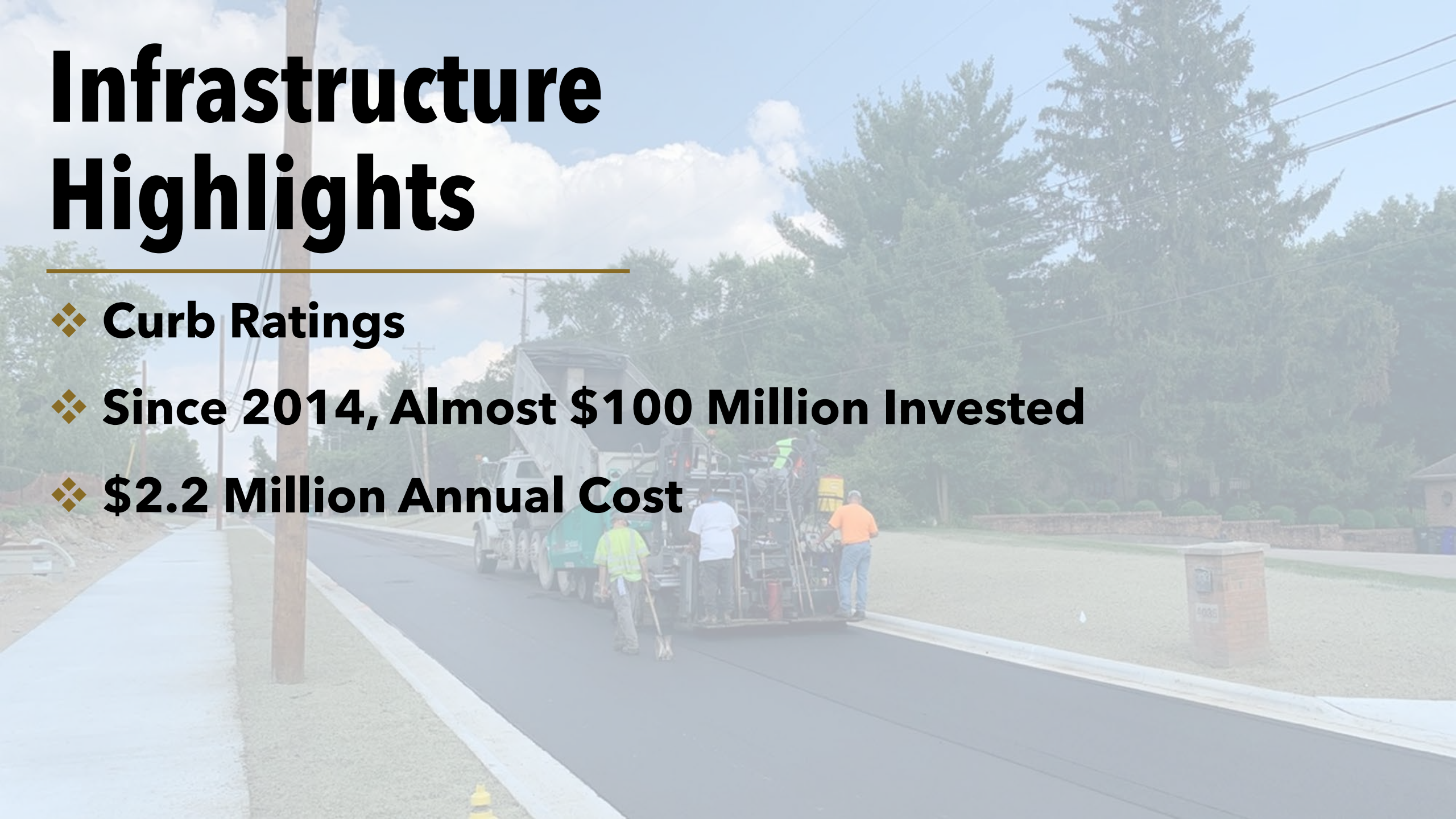


An aerial photograph of a suburban neighborhood. In the foreground, there is a large parking lot filled with various cars. To the left, several houses with green lawns are visible. In the background, a dense line of trees separates the residential area from a more developed area with multi-story apartment buildings. The sky is clear and blue.

REARVIEW MIRROR

Infrastructure Highlights

- ❖ **Curb Ratings**
- ❖ **Since 2014, Almost \$100 Million Invested**
- ❖ **\$2.2 Million Annual Cost**



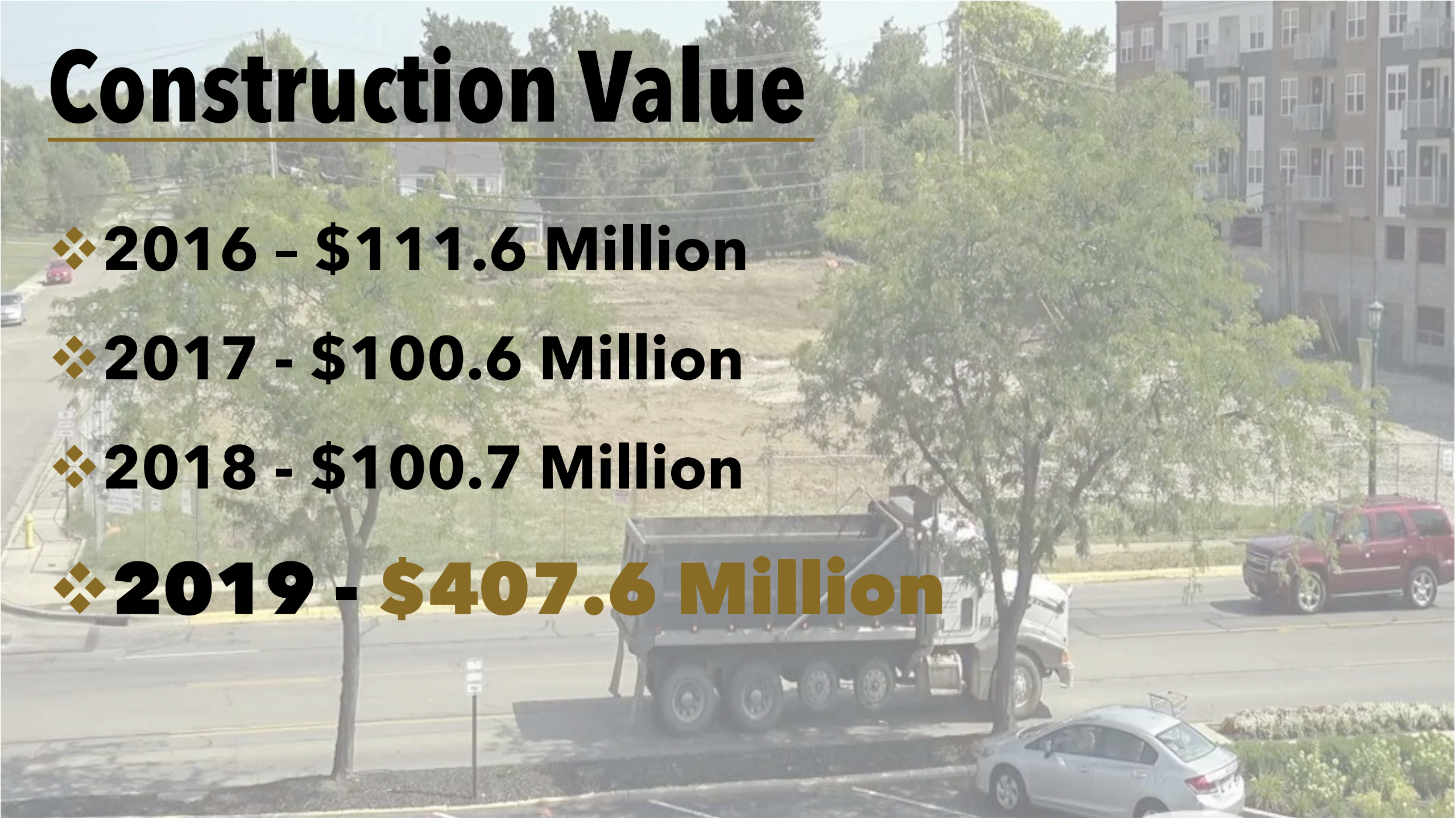
Construction Value

❖ 2016 - \$111.6 Million

❖ 2017 - \$100.6 Million

❖ 2018 - \$100.7 Million

❖ 2019 - **\$407.6 Million**



Arts & Culture Master Plan

- ❖ **Guiding Framework**
- ❖ **Expanding Public Art**
- ❖ **Continued Programming**

Devon Pool House

❖ Upgraded Amenities

❖ Next Phase



Tree of Life

- ❖ **5000 Arlington Centre Blvd.**
- ❖ **Eight-year Dispute Process**
- ❖ **Largest Zoned Parcel for Office**



A stylized map of a city grid. The map shows a network of streets and building footprints. The streets are labeled: 'NORTHWEST BLVD' on the left, 'NORTH STAR RD' on the right, and 'LANE AVENUE' at the bottom. The building footprints are represented by white and grey shapes. The streets are highlighted with colored borders: blue for Northwest Blvd, orange for Lane Avenue, and purple for North Star Rd. The title 'DEFINING A NEW CENTURY' is centered over the map, with a horizontal line underlining the word 'DEFINING'.

DEFINING A NEW CENTURY

History Trail

- ❖ **Pleasant Litchford**
- ❖ **Formalize History Sign Program**
- ❖ **Replace & Repair Existing Signs**

Parks Plan Implementation

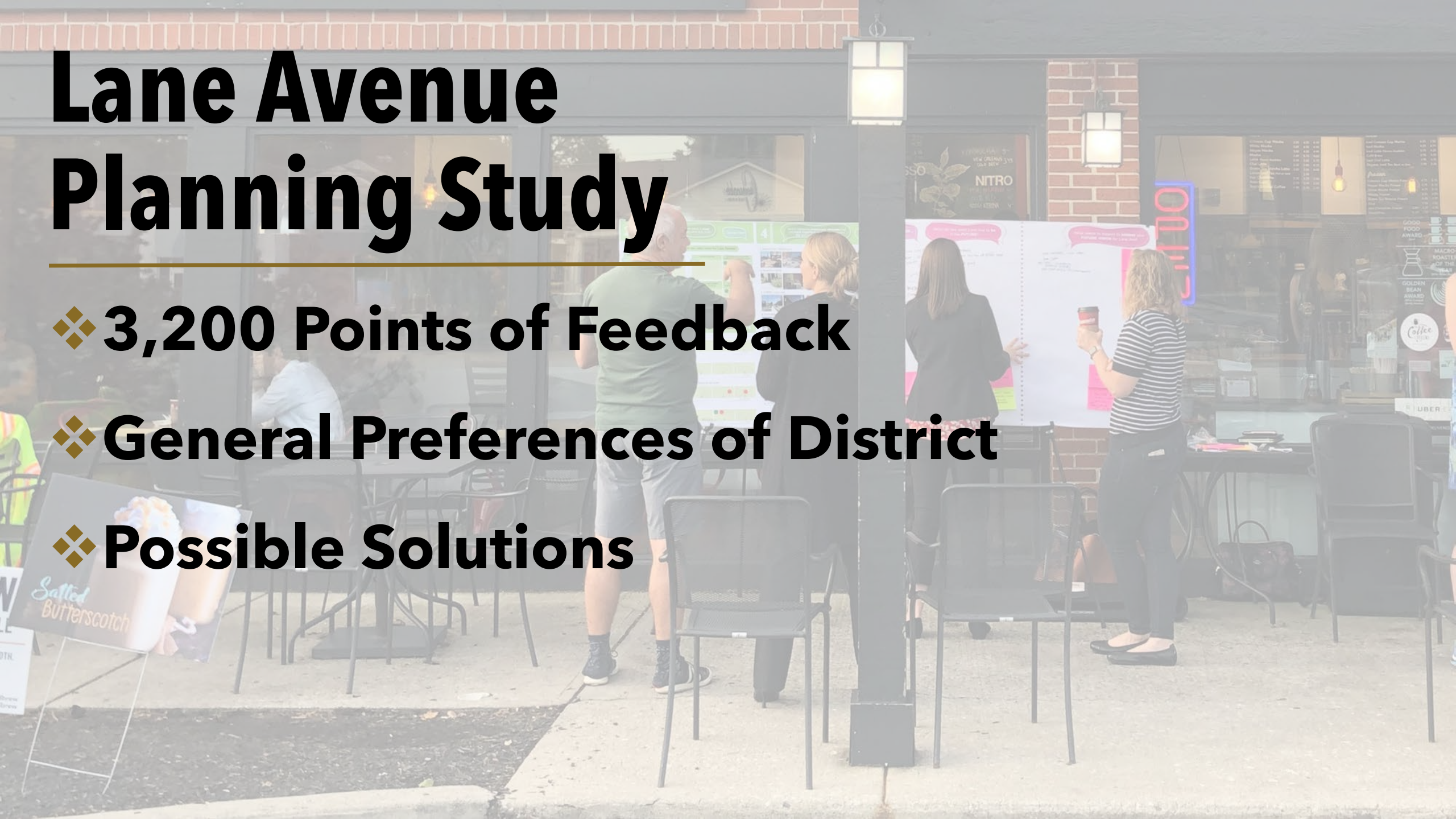
❖ **New Community Park Playgrounds**

❖ **Northam Park Upgrades**



Lane Avenue Planning Study

- ❖ **3,200 Points of Feedback**
- ❖ **General Preferences of District**
- ❖ **Possible Solutions**



Community Center Feasibility Task Force

- ❖ **Three Basic Questions**
- ❖ **Seeking Community Input**
- ❖ **Community Survey**

Community Relations Committee

❖ Welcome | Connect | Belong

❖ Educate | Inform | Enlighten

❖ Gather | Share | Celebrate





STATE OF THE CITY

ADDRESS

A bronze statue of a bear, likely a grizzly or brown bear, standing on a black pedestal. The bear is facing left, with its head slightly turned. The statue is highly detailed, showing the texture of the bear's fur. The background is a light-colored, textured wall. The text "COMMUNITY AWARDS" is overlaid in the center of the image, with "COMMUNITY" on the top line and "AWARDS" on the bottom line, separated by a thin horizontal line.

COMMUNITY AWARDS



BUSINESS NOMINEES

Adam Parsons and the UA Veterinary Hospital

Dr. Kristin E. Devor

Melia Wolf and Cover to Cover Children's Books

Arlington Urgent Care

COhatch

A bronze statue of a bear, likely a grizzly or brown bear, standing on a black, cylindrical base. The bear is depicted in a walking or standing pose, facing left. The statue has a highly detailed, textured surface representing fur. The background is a light-colored, rough stone wall. The text "Cover to Cover Children's Books" is overlaid in a large, bold, brown font with a slight shadow effect.

Cover to Cover Children's Books

Owner - Melia Wolf



COMMUNITY ENRICHMENT

NOMINEES

Susan Caruso and the Northam Park Tennis Advisory

Jim Nicklaus and Bob Wandel

Tracy Peters

Kathy Meyer and Ellen Erlanger

Karla Gengler-Novak

Demi Tsapatsaris

The Citizen Financial Review Task Force

A bronze sculpture of a bear, likely a grizzly or brown bear, standing on a rocky base. The bear is depicted in a walking or standing pose, facing left. The sculpture is highly detailed, showing the texture of the bear's fur. The background is a stone wall, and the entire scene is overlaid with a semi-transparent dark grey rectangle containing the text.

Jim Nicklaus and Bob Wandel



COMMUNITY SAFETY **NOMINEES**

Community FLT Leadership Team

School Resource Officers

The Stand Project Members and Community Partners

A bronze sculpture of a bear, likely a grizzly or brown bear, standing on a rocky base. The bear is facing left, with its head slightly turned. The sculpture is highly detailed, showing the texture of the bear's fur. It is positioned in front of a light-colored, textured stone wall. The text "The Stand Project Members and Community Partners" is overlaid in a bold, brown font across the center of the image.

The Stand Project Members and Community Partners

A bronze sculpture of a bear, likely a grizzly or brown bear, standing on a black pedestal. The bear is depicted in a walking or standing pose, facing left. The sculpture is highly detailed, showing the texture of the bear's fur. The background is a light-colored, textured wall. The text "SENIOR AWARD" is overlaid in large, bold, black capital letters, with a thin horizontal line above the word "SENIOR".

SENIOR AWARD

A detailed bronze sculpture of a bear, likely a grizzly or brown bear, standing on a rocky base. The bear is depicted in a walking or standing pose, facing left. The sculpture is highly detailed, showing the texture of the bear's fur and the ruggedness of the rock. It is mounted on a black, cylindrical pedestal. The background is a light-colored, textured stone wall.

SUSAN MAXEY



YOUTH NOMINEES

Greensview Elementary School Students, led by Mark Walter

The UA Idea Day Planning Team

Ellen North and Addison Rosenbusch

A bronze sculpture of a bear, likely a grizzly or brown bear, standing on a rocky base. The bear is facing left, with its head slightly lowered. The sculpture is highly detailed, showing the texture of the bear's fur. The background is a rough, light-colored stone wall. The text "GREENSVIEW ELEMENTARY STUDENTS" is overlaid in a bold, gold-colored font across the middle of the image.

GREENSVIEW ELEMENTARY STUDENTS

TONIGHT'S PERFORMANCE



UAHS VOCAL MUSIC

RODGERS + HAMMERSTEIN'S CINDERELLA



Purchase tickets at uavocalmusic.org

A photograph of an open wooden barn door with a text overlay. The door is made of light-colored wood with vertical slats and a diagonal brace. It is open, revealing a bright outdoor scene with green grass and trees. The text "THANK YOU" is written in large, bold, black capital letters, underlined, and "FOR COMING" is written in large, bold, black capital letters below it. The background is a warm, slightly blurred interior of a barn or stable, with a light fixture visible on the left wall and a door on the right.

THANK YOU

FOR COMING