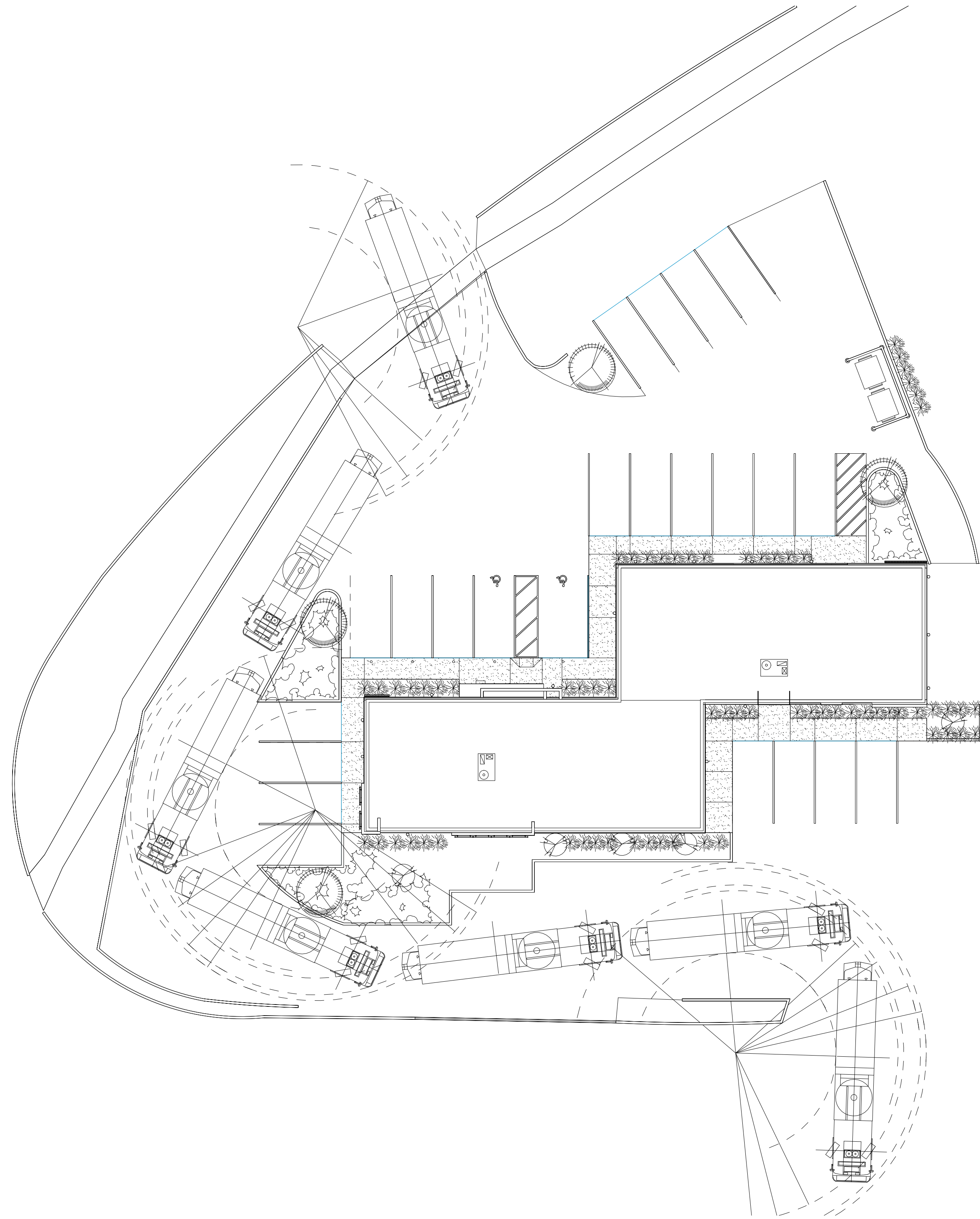
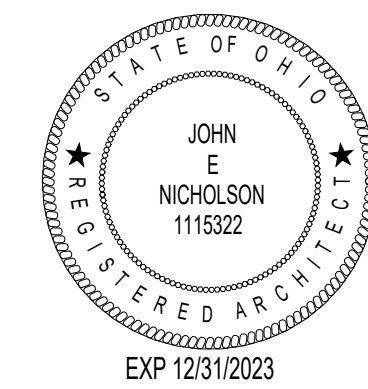


COPYRIGHT 2022 NICHOLSON + LITTLE ARCHITECTURE | DESIGN, LTD. THE DRAWINGS, ARRANGEMENTS, ANNOTATIONS, AND GRAPHICAL REPRESENTATIONS CONTAINED WITHIN THESE DOCUMENTS ARE THE PROPERTY OF NICHOLSON + LITTLE ARCHITECTURE | DESIGN, LTD AND RETAIN OWNERSHIP OF THE DOCUMENTS IN ITS ENTIRETY. THE DOCUMENTS ARE INSTRUMENTS OF SERVICE AND ARE THE INTELLECTUAL AND PHYSICAL PROPERTY OF THE ARCHITECT.



1 EMERGENCY VEHICLE TURNING RADIUS  
C101 1/16" = 1'-0"

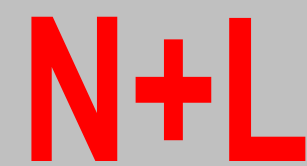


SCHEMATIC  
07/12/2023

GLAMM DENTISTRY C101  
2164 RIVERSIDE DR | COLUMBUS OH | 43221

C101

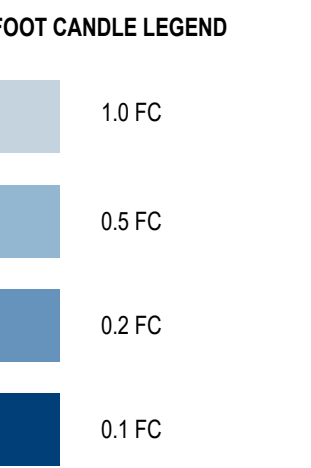
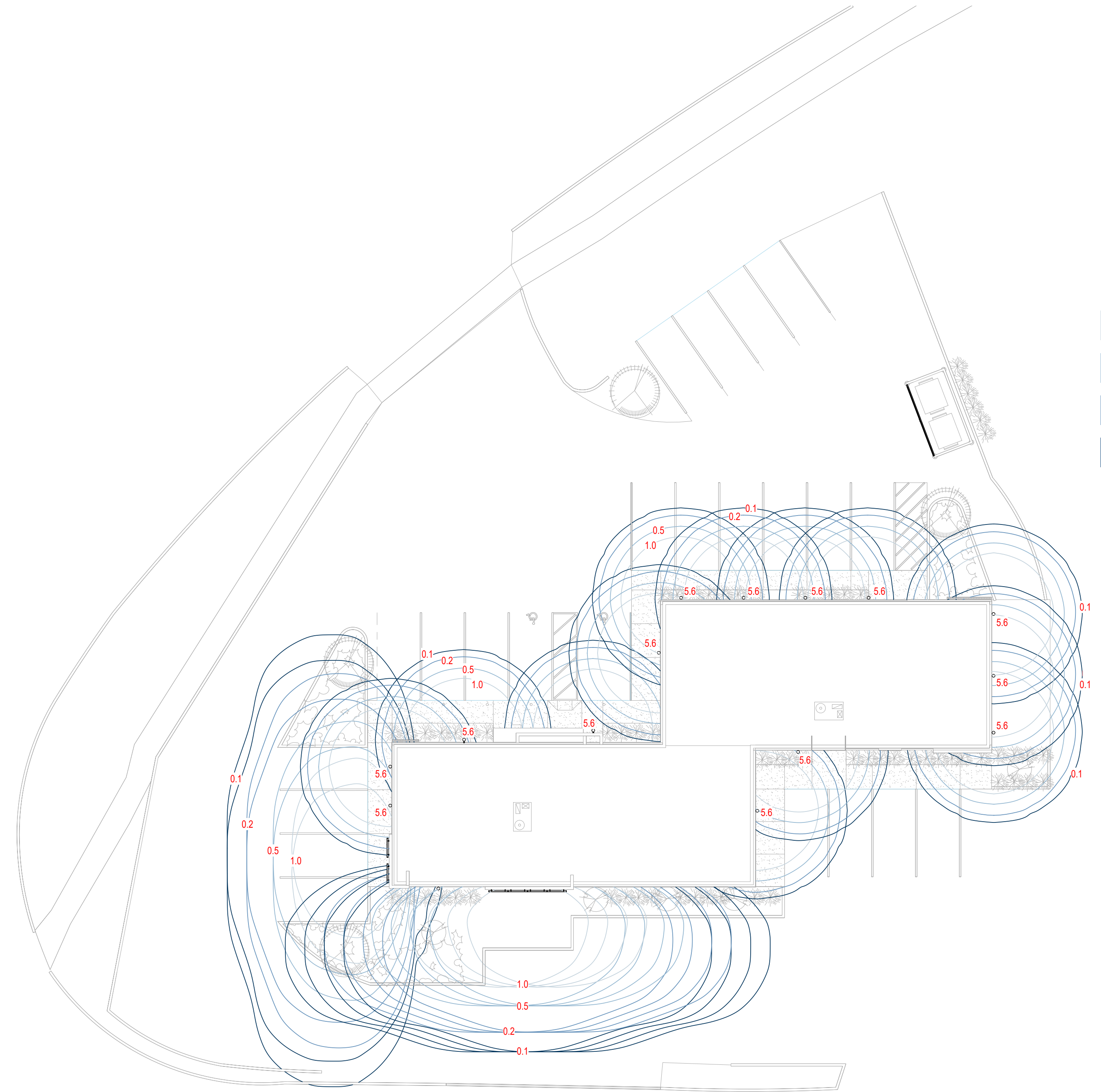
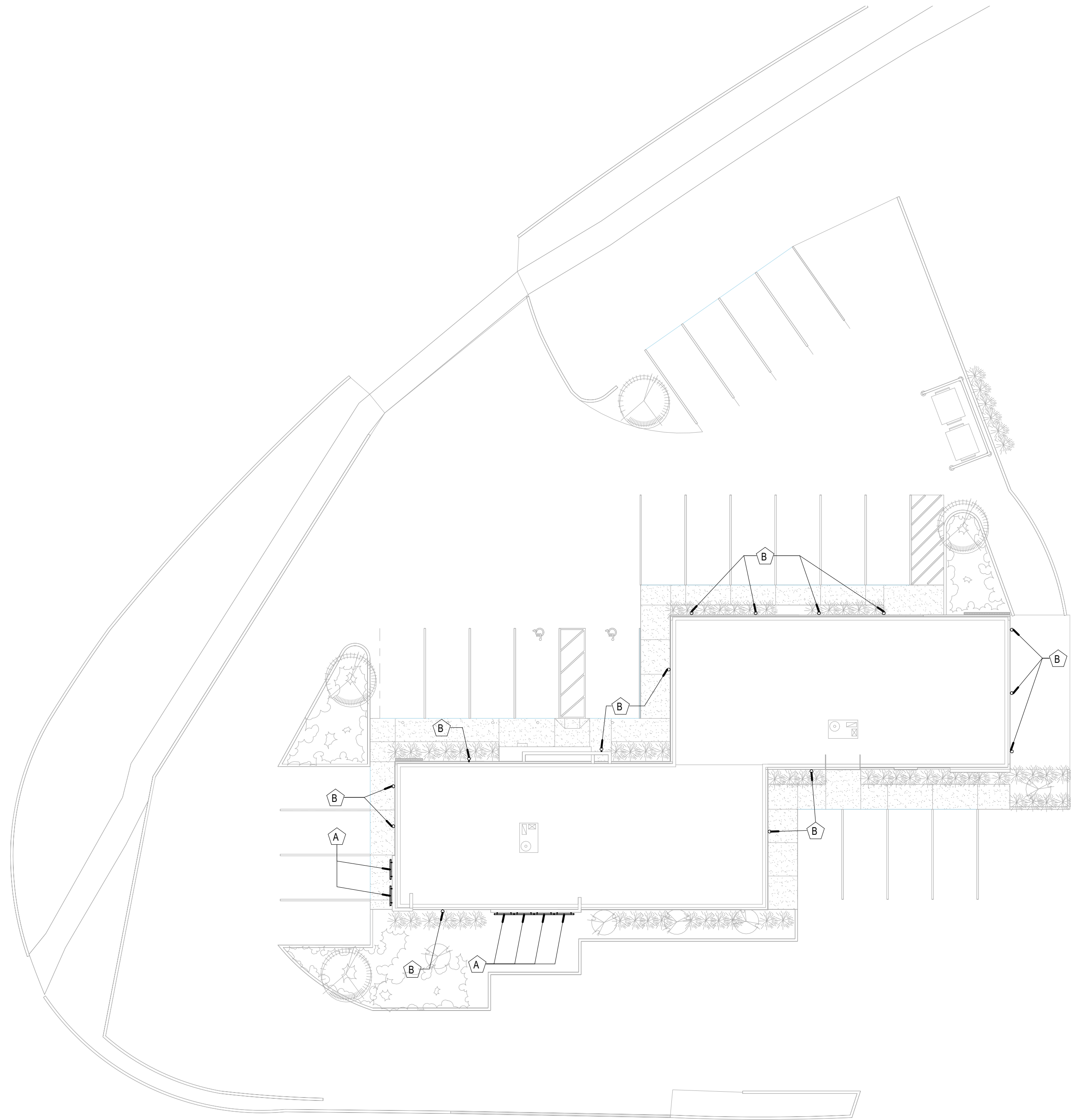
7/12/2023  
10:44:19 PM



NICHOLSON + LITTLE ARCHITECTURE | DESIGN | LTD.

614.330.8987  
561 Park Overlook Dr., Worthington, Oh 43085  
nicholsonlittlearchitecture@gmail.com

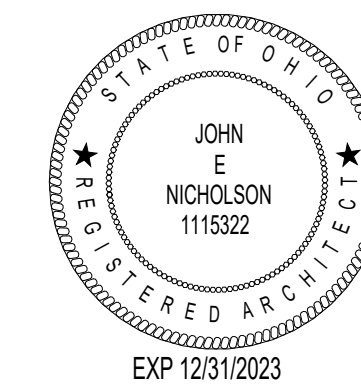
LIGHTING FIXTURE SCHEDULE							
MARK	COUNT	MODEL	MANUFACTURER	BRAND	URL	LAMP	COMMENTS
A	6	4750L 4FT KMS: WALL WASHER	Acuity Brands Lighting	Lithonia Lighting	www.AcuityBrandsLighting.com	LED	OR EQUAL
B	15	EVO6WC: DOWN LIGHT	Acuity Brands Lighting	Gotham Architectural Lighting	http://www.acuitybrands.com/BIMLookup.aspx?B=GAL&F=Evo Cylinder	LED	OR EQUAL



1 SITE LIGHTING PLAN  
C102 1/16" = 1'-0"

2 PHOTOMETRIC PLAN  
C102 1/16" = 1'-0"

COPYRIGHT 2022 NICHOLSON + LITTLE ARCHITECTURE | DESIGN, LTD. THE DRAWINGS, ARRANGEMENTS, ANNOTATIONS, AND GRAPHICAL REPRESENTATIONS CONTAINED WITHIN THESE DOCUMENTS ARE THE PROPERTY OF NICHOLSON + LITTLE ARCHITECTURE | DESIGN, LTD AND RETAIN OWNERSHIP OF THE DOCUMENTS IN ITS ENTIRETY. THE DOCUMENTS ARE INSTRUMENTS OF SERVICE AND ARE THE INTELLECTUAL AND PHYSICAL PROPERTY OF THE ARCHITECT.





COPYRIGHT 2022 NICHOLSON + LITTLE ARCHITECTURE | DESIGN, LTD. THE DRAWINGS, ARRANGEMENTS, ANNOTATIONS, AND GRAPHICAL REPRESENTATIONS CONTAINED WITHIN THESE DOCUMENTS ARE THE PROPERTY OF NICHOLSON + LITTLE ARCHITECTURE | DESIGN, LTD AND RETAIN OWNERSHIP OF THE DOCUMENTS IN ITS ENTIRETY. THE DOCUMENTS ARE INSTRUMENTS OF SERVICE AND ARE THE INTELLECTUAL AND PHYSICAL PROPERTY OF THE ARCHITECT.

**PROPERTY INFORMATION:**

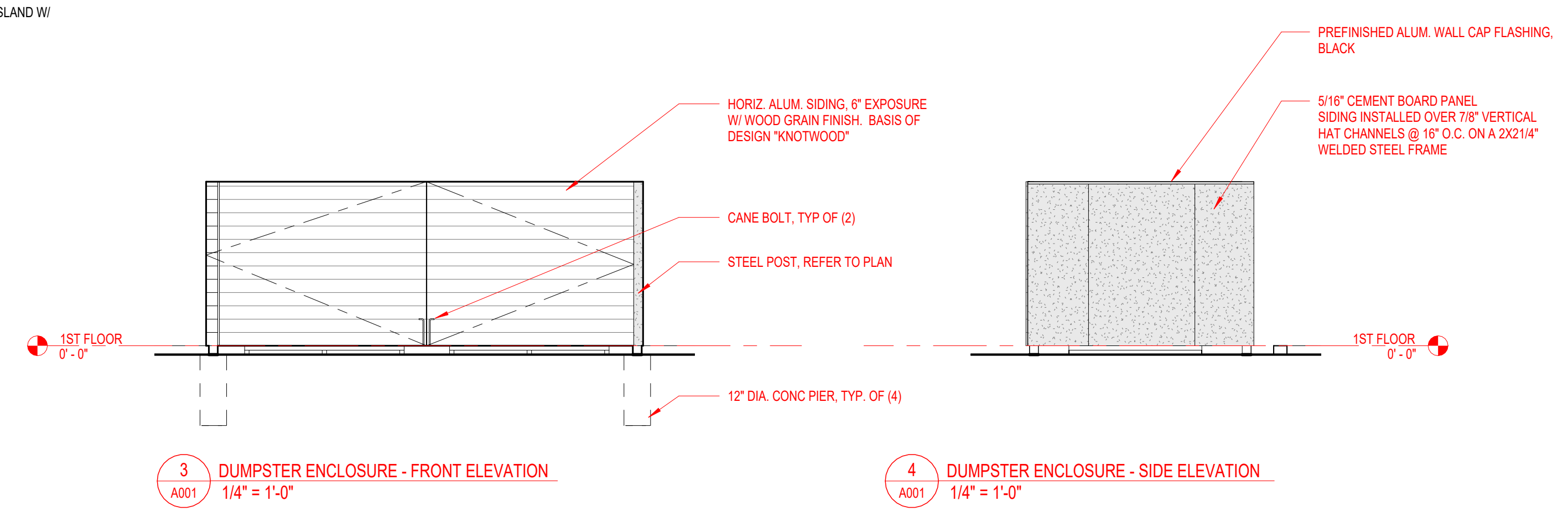
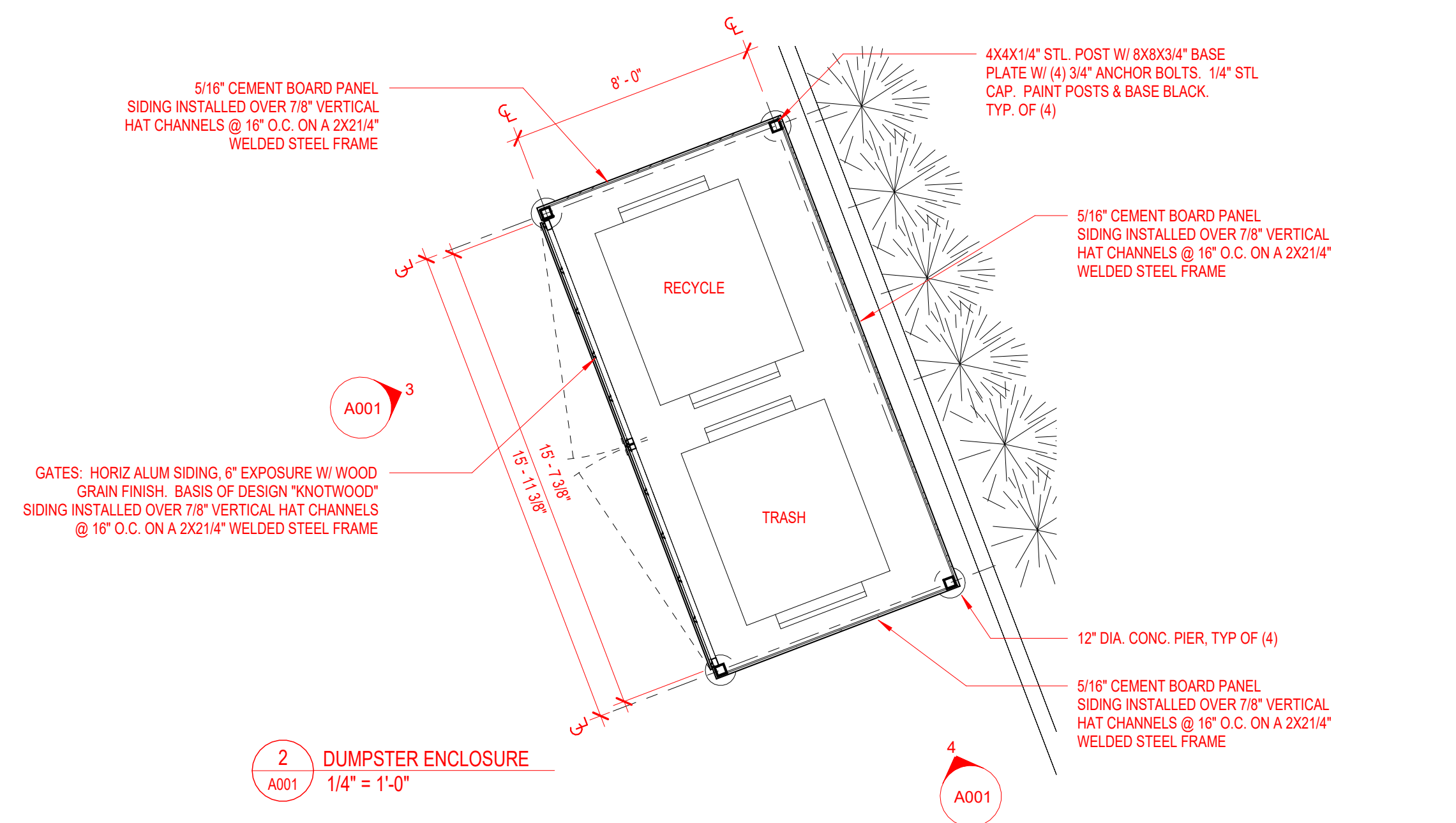
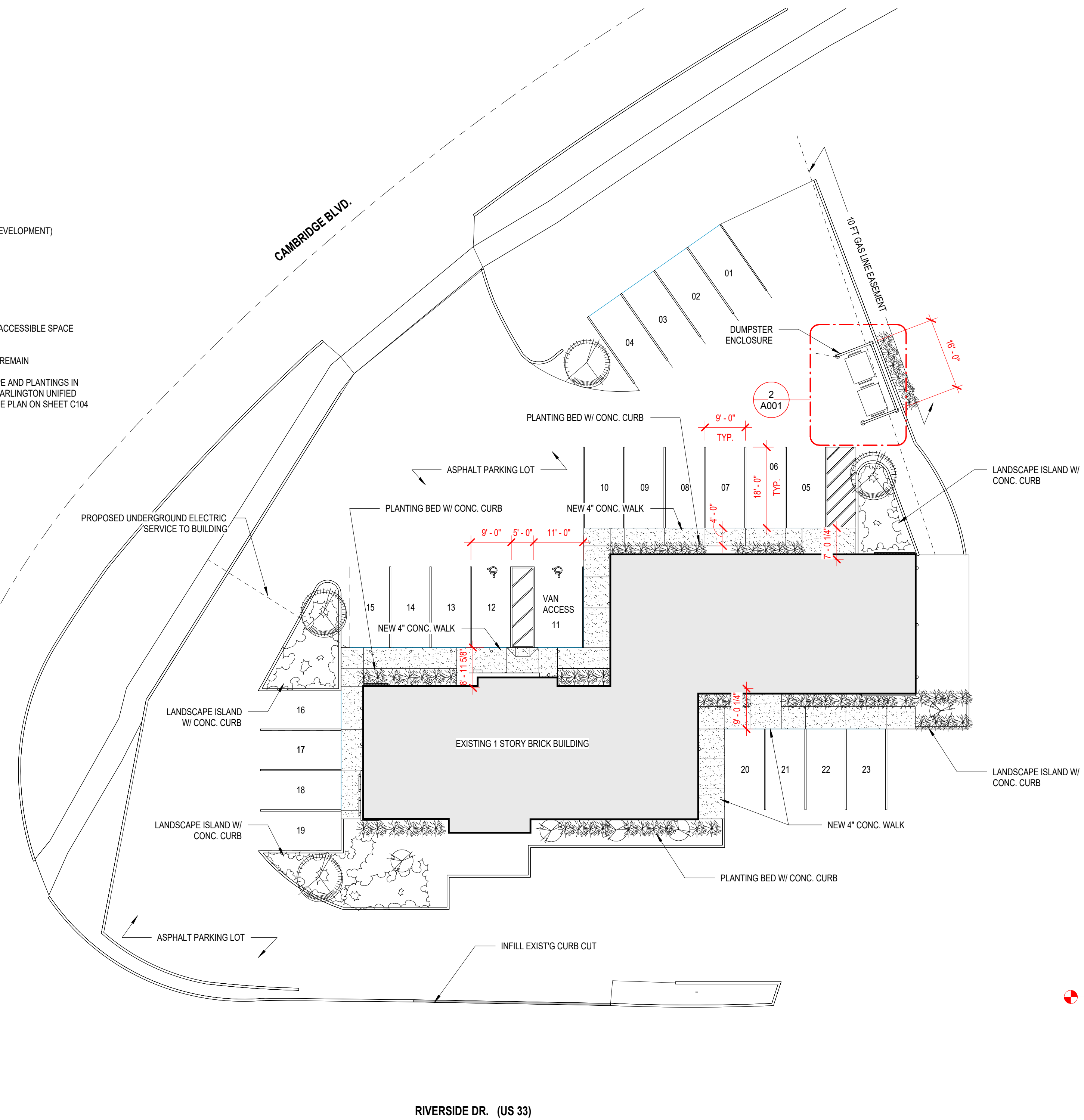
ADDRESS: 2164 RIVERSIDE DR.  
 PARCEL ID: 070-001094 & 070-001107  
 ZONING DISTRICT: PMUD (PLANNED MIXED USE DEVELOPMENT)  
 FLOOD ZONE: X  
 ACRES: 0.611

**PARKING:**  
 16 PARKING SPACES REQUIRED  
 23 PARKING SPACES PROVIDED

**TABLE 1106.1: ACCESSIBLE PARKING SPACES**  
 26-50: 2 ACCESSIBLE SPACES REQUIRED. 1 VAN ACCESSIBLE SPACE

**SITE DRAINAGE:**  
 EXISTING DOWNSPOUTS AND SITE DRAINAGE TO REMAIN

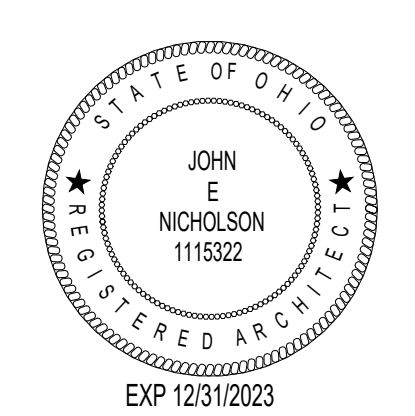
**LANDSCAPE / PLANTINGS:** PROPOSED LANDSCAPE AND PLANTINGS IN ACCORDANCE WITH ARTICLE 6.07 OF THE UPPER ARLINGTON UNIFIED DEVELOPMENT ORDINANCE. REFER TO LANDSCAPE PLAN ON SHEET C104



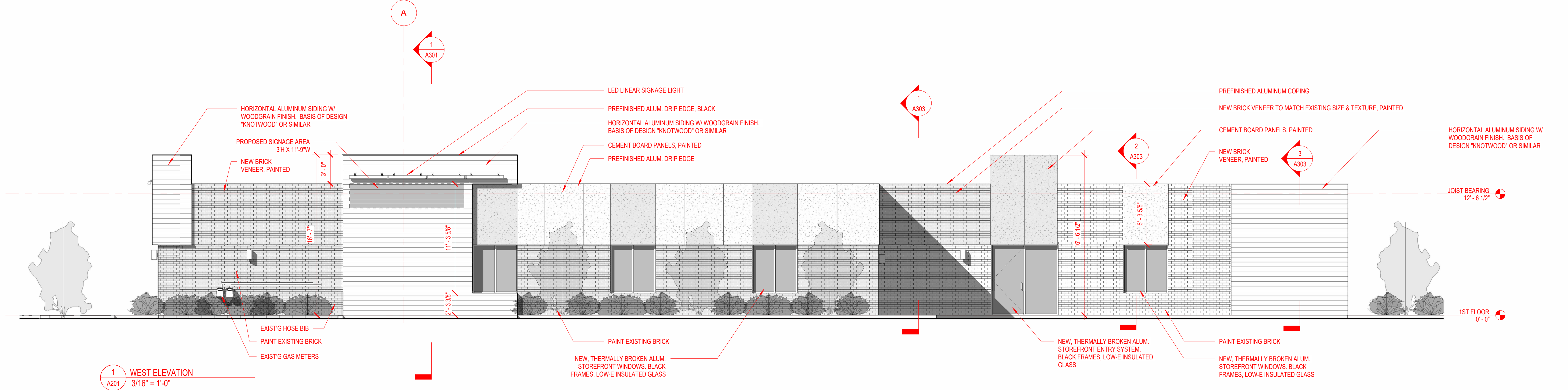
1 SITE PLAN  
 A001  
 1/16" = 1'-0"

3 DUMPSTER ENCLOSURE - FRONT ELEVATION  
 A001  
 1/4" = 1'-0"

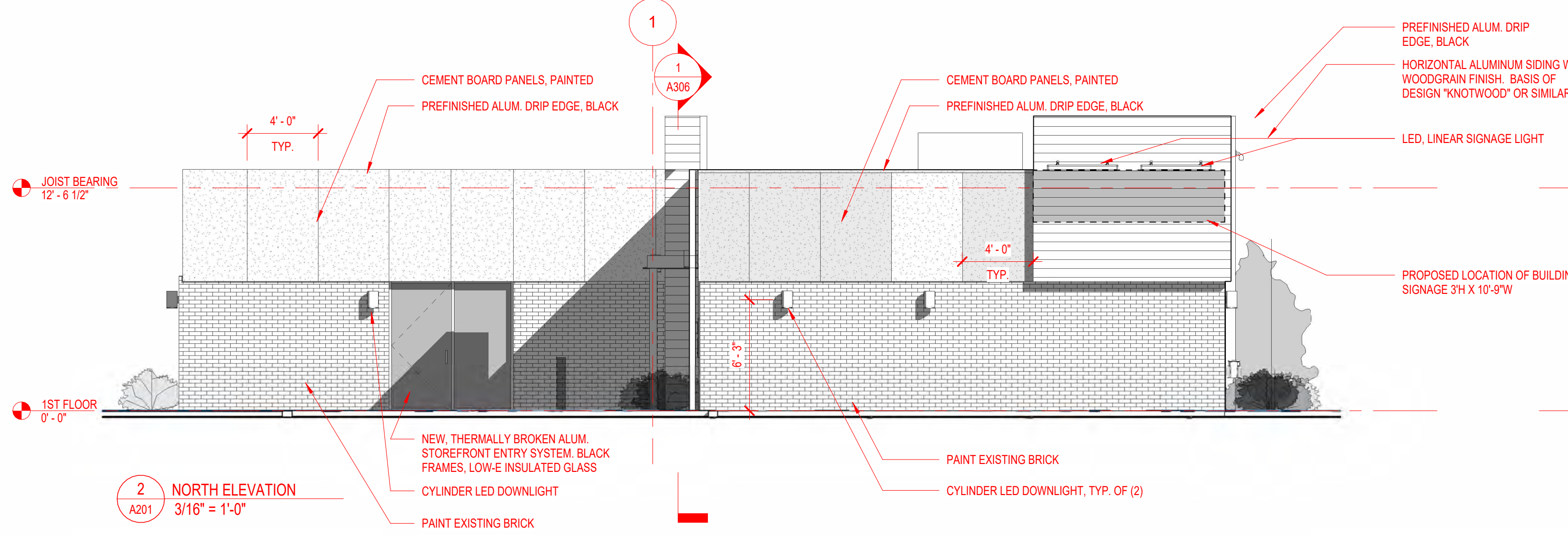
4 DUMPSTER ENCLOSURE - SIDE ELEVATION  
 A001  
 1/4" = 1'-0"



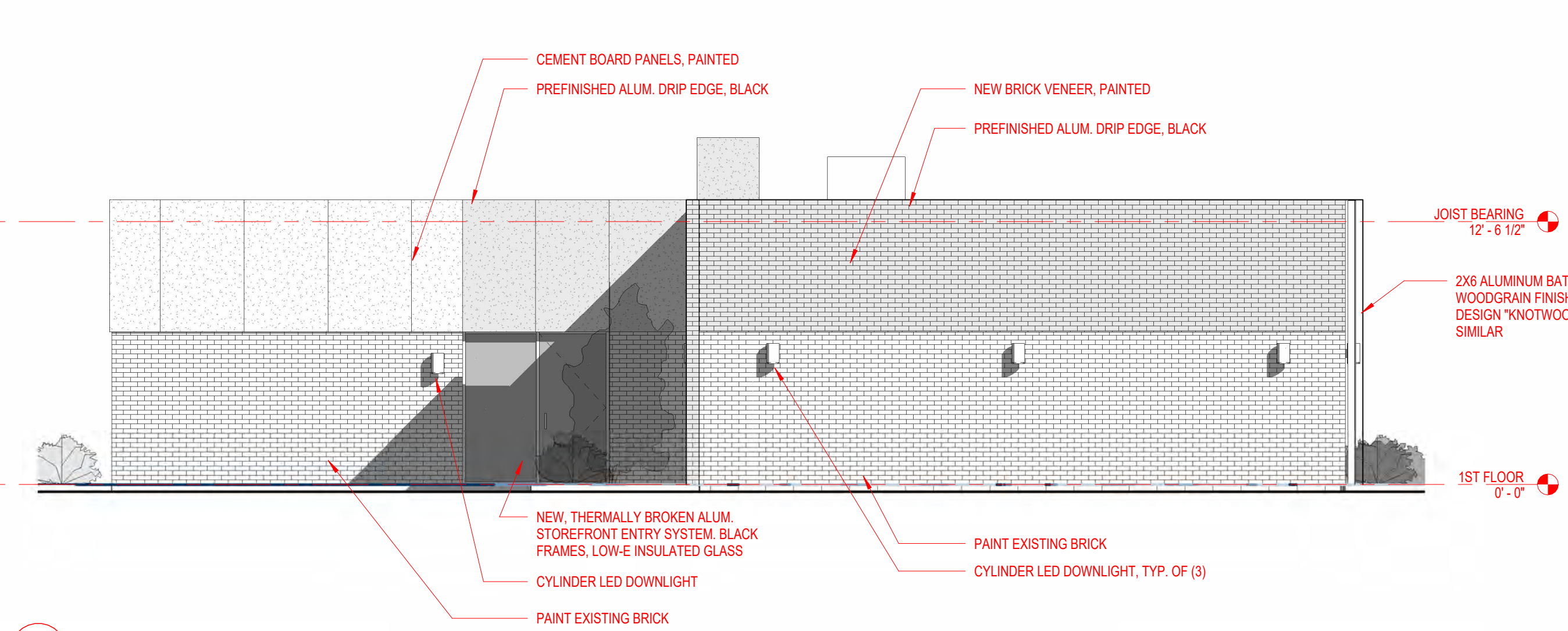
COPYRIGHT 2022 NICHOLSON + LITTLE ARCHITECTURE | DESIGN, LTD. THE DRAWINGS, ARRANGEMENTS, ANNOTATIONS, AND GRAPHICAL REPRESENTATIONS CONTAINED WITHIN THESE DOCUMENTS ARE THE PROPERTY OF NICHOLSON + LITTLE ARCHITECTURE | DESIGN, LTD AND RETAIN OWNERSHIP OF THE DOCUMENTS IN ITS ENTIRETY. THE DOCUMENTS ARE INSTRUMENTS OF SERVICE AND ARE THE INTELLECTUAL AND PHYSICAL PROPERTY OF THE ARCHITECT.



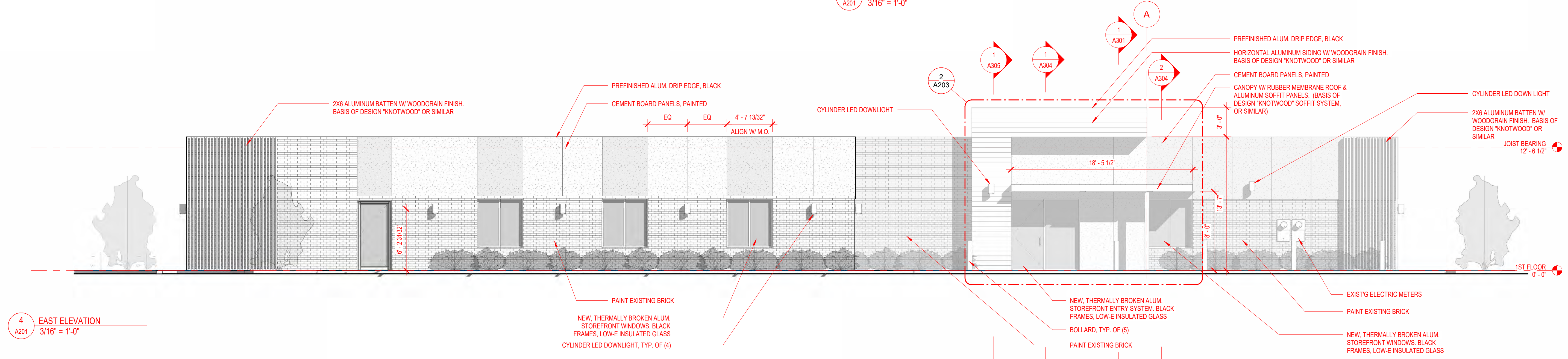
1 WEST ELEVATION  
A201  
3/16" = 1'-0"



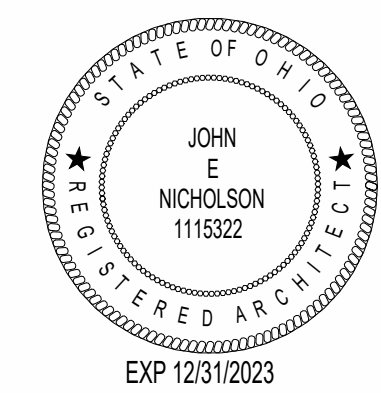
2 NORTH ELEVATION  
A201  
3/16" = 1'-0"



3 SOUTH ELEVATION  
A201  
3/16" = 1'-0"

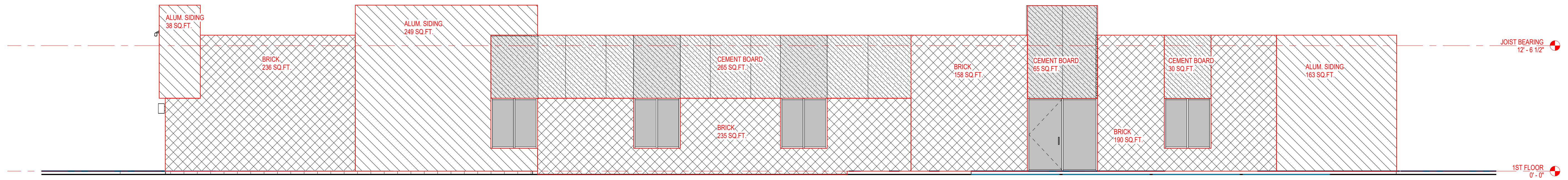


4 EAST ELEVATION  
A201  
3/16" = 1'-0"



SCHEMATIC  
07/12/2023

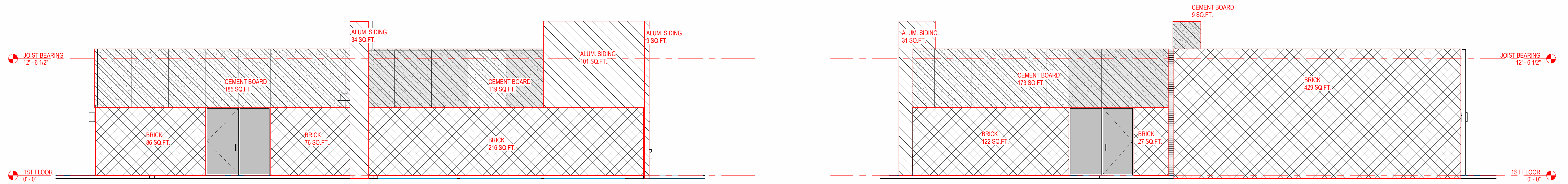
COPYRIGHT 2022 NICHOLSON + LITTLE ARCHITECTURE | DESIGN, LTD. THE DRAWINGS, ARRANGEMENTS, ANNOTATIONS, AND GRAPHICAL REPRESENTATIONS CONTAINED WITHIN THESE DOCUMENTS ARE THE PROPERTY OF NICHOLSON + LITTLE ARCHITECTURE | DESIGN, LTD AND RETAIN OWNERSHIP OF THE DOCUMENTS IN ITS ENTIRETY. THE DOCUMENTS ARE INSTRUMENTS OF SERVICE AND ARE THE INTELLECTUAL AND PHYSICAL PROPERTY OF THE ARCHITECT.



1 WEST ELEVATION - material take off  
3/16" = 1'-0"

50% OF EXTERIOR MATERIAL REQUIRED TO BE BRICK  
TOTAL MATERIAL: 4902 SQ.FT.  
REQUIRED BRICK: 2369 SQ.FT.  
ACTUAL BRICK: 2607 SQ.FT. = 54.3%

WEST	EAST	NORTH	SOUTH
BRICK: 819 SQ.FT.	BRICK: 832 SQ.FT.	BRICK: 378 SQ.FT.	BRICK: 578 SQ.FT.
OTHER: 810 SQ.FT.	OTHER: 724 SQ.FT.	OTHER: 448 SQ.FT.	OTHER: 213 SQ.FT.

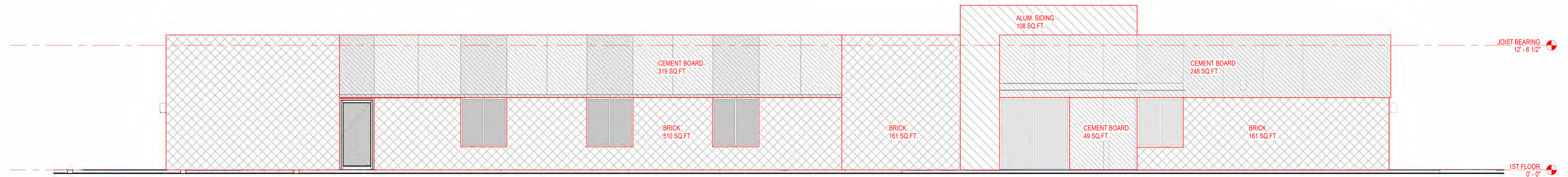


2 NORTH ELEVATION - material take off  
3/16" = 1'-0"

BRICK: 378 SQ.FT.  
OTHER: 448 SQ.FT.

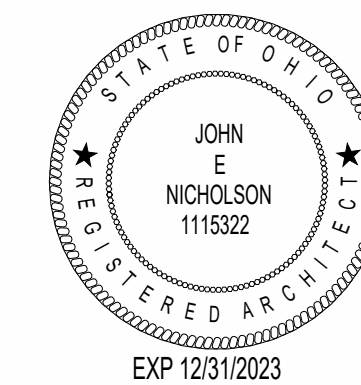
3 SOUTH ELEVATION - material take off  
3/16" = 1'-0"

BRICK: 578 SQ.FT.  
OTHER: 213 SQ.FT.



4 EAST ELEVATION - material take off  
3/16" = 1'-0"

BRICK: 832 SQ.FT.  
OTHER: 724 SQ.FT.



COPYRIGHT 2022 NICHOLSON + LITTLE ARCHITECTURE | DESIGN, LTD. THE DRAWINGS, ARRANGEMENTS, ANNOTATIONS, AND GRAPHICAL REPRESENTATIONS CONTAINED WITHIN THESE DOCUMENTS ARE THE PROPERTY OF NICHOLSON + LITTLE ARCHITECTURE | DESIGN, LTD AND RETAIN OWNERSHIP OF THE DOCUMENTS IN ITS ENTIRETY. THE DOCUMENTS ARE INSTRUMENTS OF SERVICE AND ARE THE INTELLECTUAL AND PHYSICAL PROPERTY OF THE ARCHITECT.



VIEW OF PROPOSED EAST ELEVATION



EXISTING VIEW OF EAST ELEVATION



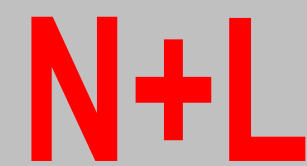
EXISTING VIEW OF NORTHWEST CORNER



VIEW OF PROPOSED MAIN ENTRY

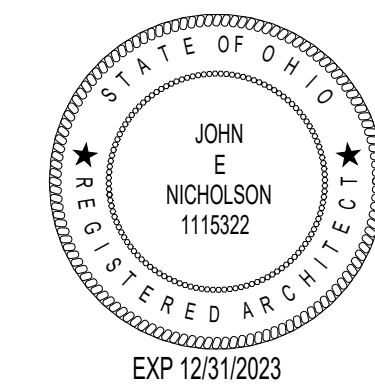


PROPOSED NORTHWEST CORNER



NICHOLSON + LITTLE ARCHITECTURE | DESIGN | LTD.

614.330.8967  
561 Park Overlook Dr., Worthington, Oh 43085  
nicholsonlittlarchitecture@gmail.com



SCHEMATIC  
DATE: 07/12/2023

GLAMM DENTISTRY  
2164 RIVERSIDE DR | COLUMBUS OH | 43221

A901

7/12/2023  
10:44:47 PM

COPYRIGHT 2022 NICHOLSON + LITTLE ARCHITECTURE | DESIGN, LTD. THE DRAWINGS, ARRANGEMENTS, ANNOTATIONS, AND GRAPHICAL REPRESENTATIONS CONTAINED WITHIN THESE DOCUMENTS ARE THE PROPERTY OF NICHOLSON + LITTLE ARCHITECTURE | DESIGN, LTD AND RETAIN OWNERSHIP OF THE DOCUMENTS IN ITS ENTIRETY. THE DOCUMENTS ARE INSTRUMENTS OF SERVICE AND ARE THE INTELLECTUAL AND PHYSICAL PROPERTY OF THE ARCHITECT.



VIEW OF PROPOSED NORTHWEST CORNER



EXISTING WEST ELEVATION



PROPOSED WEST ELEVATION



PROPOSED WEST ELEVATION

